

BILL HANNEY'S  
NORTH SHORE  
**MUSIC THE TRE**



David  
Coffee  
IN

30<sup>th</sup>  
ANNUAL  
PRODUCTION

A  
CHRISTMAS  
CAROL  
A MUSICAL GHOST STORY



DECEMBER 2 - DECEMBER 23, 2021



## Are you still on track for retirement?

Investors have survived market swings and corrections before. But a twinge of uncertainty may have you wondering if you should get another opinion to help confirm your wealth is in the right place. That's why we've made it as easy as we can to have a complimentary, face-to-face meeting with a Financial Advisor.

Maybe you just want to know if you're really on track for retirement or if your investments could be better aligned to your goals. Or in the process of working hard for your money, you worry you've overlooked some necessary steps to transfer your wealth.

Whatever's on your mind, we're here to listen, and we'll help you evaluate your plan. It's free, and there's no obligation. Then you can decide if your wealth is getting the care it deserves.

**Nottingham Lee Wealth Management**  
Group of Wells Fargo Advisors



### **Pamela Nottingham, CFA, CFP®, CPWA®**

Managing Director – Investment Officer  
138 Conant St, 4th Floor  
Beverly, MA 01915 • Direct: (978) 524-1622  
<https://fa.wellsfargoadvisors.com/nottingham-lee>

### **Greg Lee**

Senior Vice President - Investment Officer  
138 Conant St, 4th Floor  
Beverly, MA 01915 • Direct: 978-524-1642  
<https://fa.wellsfargoadvisors.com/nottingham-lee>

NMLS 258142

**Investment and Insurance Products: • NOT FDIC Insured • NO Bank Guarantee • MAY Lose Value**

**BILL HANNEY**  
Owner and Producer

**BILL HANNEY'S**  
**NORTH SHORE**  
**MUSIC THEATRE**

**KEVIN P. HILL**  
Producing Artistic Director

Presents

# A CHRISTMAS CAROL

A MUSICAL GHOST STORY

Adapted for the stage from the Charles Dickens novella by  
**JON KIMBELL**

Assisted by **DAVID JAMES & DAVID ZOFFOLI**  
Featuring Traditional Music of the Season

And  
Original Music Composed and Arranged by  
**ALBY POTTS and JAMES WOODLAND**

Starring  
**DAVID COFFEE**  
as Ebenezer Scrooge

**SOMMER CARBUCCIA LEIGH BARRETT RUSSELL GARRETT**  
**MARCUS M. MARTIN DEREK LUSCUTOFF ALEX PUETTE**  
**MICHAEL HARMON DREW PORRETT**

**BRONSON NORRIS MURPHY ALLSUN O'MALLEY J.T. TURNER**  
**TOMMY BETZ BILLY GOLDSTEIN JAELE LAGUERRE**  
**TURNER RILEY EMILY ROYER DAN TEIXEIRA**

**JACK BAUMRIND LYDIA BOGDANOVITCH ISABELLA CARROLL JOSHUA McKENNA**  
**QUINN MURPHY AXEL SIMONS EMILIA TAGLIANI WADE GLESON TURNER**

and  
**CHERYL McMAHON**  
as Mrs. Dilber & Mrs. Fezziwig

Original Scenic Design  
**HOWARD C. JONES**

Costume Coordinator and  
Additional Costume Design  
**KELLY BAKER**

Lighting Design  
**JACK MEHLER**

Sound Design  
**LEON ROTHENBERG**

Original Hair and Wig Design  
**GERARD KELLY**

Assistant to the Director  
**BRONSON NORRIS MURPHY**

Assistant to the Choreographer  
**BRIANA FALLON**

Production Stage Manager  
**STEPHEN MacDONALD**

Associate Producer and Casting Director  
**MATTHEW CHAPPELL**

General Manager  
**KAREN NASCEMBENI**

Music Direction  
**MILTON GRANGER**

Direction and Choreography  
**KEVIN P. HILL**

Some choreography based on original choreography by **JOHN MacINNIS**

Original Production Conceived and Staged by **JON KIMBELL** for North Shore Music Theatre, Beverly, Massachusetts, 1989  
Flying Effects provided by ZFX, Inc. Silks Instructor ELLEN WAYLONIS, Esh Circus Arts Pyrotechnics Effects provided by ATLAS FIREWORKS  
A CHRISTMAS CAROL is sponsored by **AMERICAN FAMILY CARE, URGENT CARE**: Beverly, North Andover, Methuen, Swampscott

**Dedicated to the artists and staff – past, present and future – who, by their contributions to this musical, embody North Shore Music Theatre's commitment to the creative process and the community it serves.**



# COME IN. FEEL BETTER.



## AFC Beverly

[AFCUrgentCareBeverly.com](http://AFCUrgentCareBeverly.com)  
978.922.2171

## AFC Swampscott

[AFCUrgentCareSwampscott.com](http://AFCUrgentCareSwampscott.com)  
781.691.9366

## AFC North Andover

[AFCUrgentCareNorthAndover.com](http://AFCUrgentCareNorthAndover.com)  
978.470.0800

## AFC Methuen

[AFCUrgentCareMethuen.com](http://AFCUrgentCareMethuen.com)  
978.975.0700



**american family care<sup>®</sup>**  
**URGENT CARE**

# THE CHARACTERS & PLAYERS IN THEIR FAMILIAL ORDER

**SOMMER CARBUCCIA\*** as *The Narrator*, a poet and artist; the teller of this ghostly tale.

## THE SCROOGES

**DAVID COFFEE\*** as *Ebenezer Scrooge*; A tight-fisted hand at the grindstone. A squeezing, wrenching, grasping, scraping, clutching, covetous old sinner. **DEREK LUSCUTOFF** as *Young Scrooge*; A clever chap, filled with enormous potential until his great passion, greed, engrosses him. **JACK BAUMRIND** as *Boy Scrooge*; a sad boy, rejected by his father and sent far away to school. **BRONSON NORRIS MURPHY\*** as *Fred*; Handsome nephew of old Scrooge, with a cheerful voice and a sparkling laugh. **ALLSUN O'MALLEY\*** as *Belle*; Young Scrooge's betrothed; a fair maiden, honorable and pure. **TURNER RILEY** as *Meg*; Fred's bride, very pretty, with a dimpled, surprised look. **LYDIA BOGDANOVITCH** as *Fan*; Scrooge's sister, brimful of glee.

## THE CRATCHITS

**RUSSELL GARRETT\*** as *Bob Cratchit*; A clerk in the service of Ebenezer Scrooge and the loving father of a fine family. **LEIGH BARRETT\*** as *Mrs. Cratchit*; Bob's wife, poor in possessions but rich in family. **EMILIA TAGLIANI** as *Martha Cratchit*; Oldest of the Cratchit children. **WADE GLEESON TURNER** as *Peter Cratchit*; A kind, serious boy, devoted to his brother and sisters. **ISABELLA CARROLL** as *Belinda Cratchit*; Second of the Cratchit daughters and a happy lass. **QUINN MURPHY** as *Tiny Tim Cratchit*; Thoughtful and brave with his little crutch and his giddy heart.

## THE SPIRITS

**ALEX PUETTE\*** as *Jacob Marley*; Scrooge's first and only business partner; dead as a doornail. **LEIGH BARRETT\*** as *The Ghost of Christmas Past*; The first of the three spirits, she is of the air – resplendent in stars. **MARCUS M. MARTIN\*** as *The Ghost of Christmas Present*; A giant of harvest and plenty, glorious to behold. **QUINN MURPHY** and **JACK BAUMRIND** as *Ignorance & Want*; sad stricken things seen with *The Ghost of Christmas Present*. **DEREK LUSCUTOFF** as *The Ghost of Christmas Yet to Come*; Scrooge's subterranean nightmare of himself at the turning point of his life. **MICHAEL HARMON\*** and **DREW PORRETT\*** as *The Pearlys*; Versatile tumbler/acrobat/poltergeists, inspired by 19th century London's Cockney buskers — street entertainers who performed for donations. These street performers typically wore topcoats covered with pearl buttons; hence, the name. In our story, these spirits are visitors from the realm of imagination and are allies of the Narrator in the telling of his tale by attending the Spirits and otherwise moving the action of the play forward.

## THE FEZZIWIGS

**J.T. TURNER\*** as *Mr. Fezziwig*; Voluminous in his great jovial benevolence. **CHERYL McMAHON\*** as *Mrs. Fezziwig*; One vast substantial smile.

## REBELS, TOWNSFOLK, PARASITES & OTHERS

**CHERYL McMAHON\*** as *Mrs. Dilber*; Scrooge's housekeeper, a martyr and, later, a disreputable seller of goods. **BILLY GOLDSTEIN** as *Old Joe*; Keeper of the poultry shop and, later, a nefarious pawnbroker. **MARCUS M. MARTIN\*** and **J.T. TURNER\*** as *Gentleman 1 & 2*; Prosperous London merchants, both extremely charitable. **JOSHUA MCKENNA** and **AXEL SIMONS** as *London Boys*; Rambunctious street urchins. **DAN TEIXEIRA** as *Dick Wilkins*; Scrooge's best childhood friend, who died young. **TOMMY BETZ**, **BILLY GOLDSTEIN**, **JAELE LAGUERRE**, **TURNER RILEY**, **EMILY ROYER**, and **DAN TEIXEIRA** as *Residents of London*; Representing the various sorts and conditions of inhabitants.

Musicians, including those playing trumpet, flute, English horn, French horn, trombone, violin, cello, woodwinds, bass, harp, keyboard and percussion. Occasionally, some may join in the action of a scene. **MILTON GRANGER** as *Conductor* and also playing *Keyboard*. **ROBERT L. RUCINSKI** playing *Keyboard*. **WILLIAM VINT** playing *Flute and Clarinet*. **JAY DALY** playing *Trumpet*. **ALYSSA COFFEY** playing *French Horn*. **ANTHONY COSIO-MARRON** playing *Trombone*. **EMILY HALPERN LEWIS** playing *Harp*. **ZOIA BOLOGOVSKY** playing *Violin*. **JOHN BUMSTEAD** playing *Cello*. **JOSEPH HIGGINS** playing *Bass*. The musicians in North Shore Music Theatre's Orchestra are members of the American Federation of Musicians.

**STEPHEN MacDONALD\*** as *Production Stage Manager*. **DAKOTAH WILEY HORAN\*** as *Assistant Stage Manager*. **ROBERT L. RUCINSKI** as *Assistant Music Director / Rehearsal Accompanist*. **DREW PORRETT\*** as *Dance Captain*. **BRONSON NORRIS MURPHY\*** as *Assistant to the Director*. **BRIANA FALLON\*** as *Assistant to the Choreographer*. **J.T. TURNER\*** as *Understudy for Ebenezer Scrooge & Jacob Marley*. **ALEX PUETTE\*** as *Understudy for Ghost of Christmas Present and Fezziwig*. **EMILY ROYER\*** as *Study Cover for Mrs. Dilber/Mrs. Fezziwig*. **DAN TEIXEIRA** as *Study Cover for Man 1 & Man 2*. **TOMMY BETZ** as *Study Cover for Old Joe*. **BILLY GOLDSTEIN** as *Study Cover for Ghost of Christmas Yet To Come/Young Scrooge*. **DEREK LUSCUTOFF** as *Study Cover for The Narrator & Fred*. **JAELE LAGUERRE** as *Study Cover for Meg & Ghost of Christmas Past/Mrs. Cratchit*. **TURNER RILEY** as *Study Cover for Belle*. Understudies & Study Covers are never substituted unless a specific announcement is made at time of show.

\* Member of Actors' Equity Association, the Union of Professional Actors and Stage Managers in the United States.  
Special thanks to Ricola natural herb cough drops, the official cough drop of North Shore Music Theatre

*There's no place like home  
for the holidays.*

Our Local REALTORS® will help you get there.



LAMACCHIABEVERLY.COM  
(978) 993-3600

LOCATED IN THE CUMMINGS CENTER

CANADA GOOSE  
FOR HIM + HER



**G** | GIBLEES  
MENSWEAR

OVER 11,000 SQUARE FEET OF WORLD FAMOUS BRANDS  
85 Andover Street, Rt. 114, Danvers  
978.774.4080 [giblees.com](http://giblees.com)



# SCENES & MUSICAL NUMBERS

## PROLOGUE

### A theater, 1860's

"The Welcome Wassail" – Narrator, Company and Orchestra

### STAVE ONE: MARLEY'S GHOST-Christmas Eve, 1843.

#### Scene 1-A London street; later, Scrooge's Counting House

"Patapan" - The Company

"Apple Tree Wassail" - Orchestra

"The Coventry Shepherd's Carol" - Orchestra

"God Rest Ye Merry Gentleman" - Street Boys, Fred

#### Scene 2-The Street; Later, Scrooge's Chambers

"The Cold December [El Desembre Congelat]" - Orchestra

### STAVE TWO: THE FIRST OF THE THREE SPIRITS

#### Scene 1-Scrooge's Bedchamber

"A Dream Within a Dream" - The Ghost of Christmas Past

#### Scene 2-A Country Road

"Ding, Dong, Merrily On High" - Villagers

#### Scene 3-A School

#### Scene 4-The Fezziwig's Warehouse

"Here We Come A-Wassailing" - The Fezziwigs and ensemble.

#### Scene 5-A London Street

### STAVE THREE: THE SECOND OF THE THREE SPIRITS

#### Scene 1-Scrooge's Bedchamber

"Boar's Head Carol" - The Ghost of Christmas Present and Company

"Patapan" (reprise) - The Company

"The Gloucestershire Wassail" - The Ghost of Christmas Present and Company

## THE INTERVAL

### Ent' racte

"Boar's Head Carol" (reprise) - Carolers

#### Scene 2-The Cratchit Home

"We Saw Three Ships" - Tiny Tim and Mr. Cratchit

"We Wish You A Merry Christmas" - The Cratchits

"In The Bleak Mid-Winter" - Orchestra

#### Scene 3-Fred's Home

"Tomorrow Shall Be My Dancing Day" - Fred, Meg and Guests

#### Scene 4-A Wasteland

### STAVE FOUR: THE LAST OF THE THREE SPIRITS

#### Scene 1-Scrooge's Bedchamber; Later, A Tavern

"Isn't It Grand Boys?" - Mrs. Dilbur, Old Joe and Ensemble

#### Scene 2 - A London Street

#### Scene 3-At The Entrance To A Church

#### Scene 4-The Cratchit Home

"The Little Child" - Mrs. Cratchit, Narrator

#### Scene 5-A Churchyard

### STAVE FIVE: CHRISTMAS DAY, 1843

#### Scene 1-Scrooge's Bedchamber; Later, The Street

"Past Three O'Clock" - Carolers

#### Scene 2-The Street Outside Scrooge's Chambers

"Lo, How A Rose E'er Blooming/Begone, Dull Care" - Orchestra

"Simple Gifts" - Orchestra

#### Scene 3-Scrooge's Counting House

## EPILOGUE

### A Theater, 1860's

"We Wish You A Merry Christmas" - The Company

# WHO'S WHO IN THE CAST



## DAVID COFFEE

(*Ebenezer Scrooge*) returns to celebrate his 27<sup>th</sup> holiday season at NSMT. A *Christmas Carol* marks David's 61<sup>st</sup> production for NSMT! David comes to New England from

the Tony Award-winning Dallas Theater Center where he had the honor to appear in the first production to welcome back in-person audiences, *Tiny Beautiful Things*. In a career that spans 53 years, David has been welcomed by audiences from Portland, Oregon to Portsmouth, New Hampshire. Returning to NSMT, however, remains one of his greatest joys where his Scrooge has been described as both a New England Tradition and the G.O.A.T.! This performance is dedicated to our absent friends. Thank you for masking up and getting vaccinated so we can all be together again to celebrate! Happiest of Holidays to You! [DavidCoffee.org](http://DavidCoffee.org)



## CHERYL McMAHON

(*Mrs. Dilber/Mrs. Fezziwig*) is full of joy and gratitude to be a part of this 30th Anniversary Production of *A Christmas Carol*. A member of the original cast in 1989, Cheryl counts

this year's show as her 27th, along with David Coffee. Other NSMT shows include *Hairspray*, *My Fair Lady*, *The Music Man*, *Annie*, *The Student Prince*, *Alice in Wonderland*, *Sweeney Todd*, *Grease*, and *Jekyll and Hyde*. In New England, credits include The Lyric Stage, Speakeasy Stage, Greater Boston Stage, Goodspeed Opera House, Saco River Theatre, Wheelock Family Theatre, Charles Playhouse - *Nunsense* and *Shear Madness*, American Stage Festival, Overture and Big Stick Productions, Film credits include *Defending Jacob*, *RIPD*, *The A Plate*, *Parker Bros. Clue*, and *Brilliant Mistakes*. Thanks to Jon Kimbell, David James, David Zoffoli, Bill Hanney, and Kevin Hill for bringing *A Christmas Carol* to life.



## SOMMER CARBUCCIA

(*Narrator*) is glad to be joining North Shore Music Theatre for the first time to be a part of their 30th anniversary production of *A Christmas Carol*.

Dominican-American and raised in Miami, he is a graduate of NYU's Tisch School of the Arts and has been lucky to work over the years in theater, voice over, film and television. He is most well known for playing Eric Jackson in "Riverdale" on The CW. Live, Love, Lake.



## LEIGH BARRETT

(*Ghost of Christmas Past*, *Mrs. Cratchit*) appeared in the premier of *A Christmas Carol* in 1989 and is overjoyed to be back sharing the 30th Anniversary. NSMT credits; *The*

*Sound of Music*, *Singin' in the Rain*, *Sweeney Todd*, and *My Fair Lady*. She has worked extensively on Boston area stages, favorite roles include *Little Women*, (Wheelock Family Theatre), *Grey Gardens*, *Company*, *Gypsy*, *Souvenir* (Lyric Stage Company), *Passion*, *Great American Trailer Park* (SpeakEasy Stage), *Mame* (Reagle Music Theatre), *Ragtime*, *Wild Party*, *Three Penny*, *Sweeney Todd* (The New Rep), *Follies with Len Cariou* (Lyric Stage and Overture) Most recently she directed *The Last Five Years* for Lyric Stage Company. She is the proud recipient of four Elliot Norton Awards and the 2018 Elliot Norton Prize for Sustained Excellence. Much gratitude to Kevin, Matthew and the entire NSMT team. Above all, to Peter, Nicholas & Matthew "I can be me because I have you."

[www.LeighBarrett.com](http://www.LeighBarrett.com)



## RUSSELL GARRETT (Bob

*Cratchit*) is very happy to return for his tenth year in this wonderful holiday tradition! He has appeared extensively on Broadway and on tour with



# WHO'S WHO IN THE CAST

*The Scarlet Pimpernel*, *42nd Street*, *Seven Brides for Seven Brothers*, *Show Boat*, *My Fair Lady*, and *A Chorus Line*. Earlier this year he was clowning around as 15 characters in *The 39 Steps* and as Freddie in *Noises Off*. In recent years he played Harry Bright in *Mamma Mia!*, Higgins in *My Fair Lady*, Roger DeBris in *The Producers*, and The Interlocutor in the Elliot Norton and IRNE Award-winning production of *The Scottsboro Boys* for SpeakEasy Stage in Boston. As a director and choreographer Russell's work has been seen around the country including acclaimed productions of *Beehive: The 60s Musical*, *Hairspray*, *9 to 5*, and *The Full Monty* for Bill Hanney's Theatre By The Sea in Rhode Island and *All Shook Up* here at NSMT.



## MARCUS M. MARTIN

(*Ghost of Christmas Present*, *Man 1*) is thrilled to be making his NSMT debut spreading Christmas cheer in *A Christmas Carol*! Other Credits include: *The Wiz* (The Lion), *Little*

*Shop of Horrors* (Audrey II), *Carousel* (Enoch Snow), *The Scottsboro Boys* (Andy Wright), and *Anything Goes* (Moonface Martin). Marcus is a proud 2020 Graduate of the Music Theatre Program at Baldwin Wallace University. All thanks to God, his family, and his team at the Daniel Hoff Agency. Follow his journey on Instagram @marcusc\_m\_330.



## DEREK LUSCUTOFF

(*Young Scrooge* / *Ghost of Christmas Yet To Come*, *s/c Fred & Narrator*) is elated to return to one of his favorite theaters ever! He recently performed in the encore pro-

ductions of *Mamma Mia!* here at North Shore and Theatre By The Sea. Other credits include *Cinderella* (Paper Mill Playhouse), *Swing!* (Norwegian Cruise Line), and *A Chorus Line* (Interlakes Theatre). BA from UC Berkeley. When not performing, Derek is a piano/voice teacher and performance coach in NYC. Many thanks to NSMT, BWA agency, friends, and family! [DerekLuscutoff.com](http://DerekLuscutoff.com) @derekluscutoff



## ALEX PUETTE

(*Jacob Marley*, *u/s Ghost of Christmas Present & Mr. Fezziwig*) couldn't be more thrilled to return to NSMT after appearing as Nick Massi in 2019's hit production of *Jersey Boys* and Marley in *A Christmas Carol*.

Favorite roles include Don Lockwood in *Singing in the Rain*, Ernst in *Cabaret*, Pharoah in *Joseph...*, and Riff in *West Side Story* (Théâtre du Châtelet - Paris, France). Broadway First National tours include *Legally Blonde*, *Young Frankenstein*, and *A Christmas Story: The Musical*. Off-Broadway/New York: *New Girl In Town* at the Irish Repertory Theatre, Andrew Lipka's *I Am Harvey Milk* (starring Kristen Chenoweth) at Avery Fisher Hall and Strathmore Arts Center. Proud graduate of the University of Michigan. "Endless gratitude to Avalon Artists Group, my supportive family, Archie, and my husband, Billy."



## MICHAEL HARMON

(*Pearlie*) returns to NSMT after playing in *Mamma Mia!* Michael has also performed in The Arts Center of Coastal Carolina's production of *Mamma Mia*. He has also appeared in

**PLEASE TURN OFF ALL PHONES & ELECTRONIC DEVICES**



**THE USE OF ANY RECORDING DEVICE, EITHER AUDIO OR VIDEO, AND THE TAKING OF PHOTOGRAPHS, EITHER WITH OR WITHOUT FLASH, IS STRICTLY PROHIBITED.**



Why shop at one of those "box stores" when you can get the best quality, selection and prices with the personalized service you deserve? We are family owned and operated and it's been that way for over 60 years!

# Largest Selection of Brand Name Appliances

0%  
FINANCING  
AVAILABLE  
See store for details.

**HUGE SAVINGS  
IN OUR  
SALEM STORE**

Clearance Annex, on all

- Scratch & Dents,
- One-of-a-kinds,
- Closeouts,
- Floor Models and
- Overstock Appliances.



**PLEASE FEEL FREE TO SHOP BY APPOINTMENT  
CALL OR TEXT AT EITHER OF OUR LOCATIONS!!!**

95 Turnpike Rd./Rte. 1  
Ipswich, MA  
978-412-0033

262 Highland Ave.  
Salem, MA  
978-744-6100

**SHOP ONLINE: [www.tri-city-sales.com](http://www.tri-city-sales.com)**

*All Major Credit Cards Accepted. In Store Financing Available.*

**CURRENT**

**STORE**

**HOURS:**

Monday -

Saturday

9:00am - 6:00pm

Sunday

11:00am - 5:00pm

THANK YOU  
for shopping  
LOCAL

Buying local helps to build stronger communities, benefiting neighbors in a network of economic and social relationships, and contributing to local interests.



**NEAG**  
NEW ENGLAND AREA GROCERIES

# HOMEOWNERS BESTFRIEND

## CRANNEY HOME SERVICES

Plumbing • Heating • Cooling • Electrical • Drain Cleaning

[WWW.CRANNEYHOMESERVICES.COM](http://WWW.CRANNEYHOMESERVICES.COM)

ONE CALL DOES IT ALL  
1-800-CRANNEY



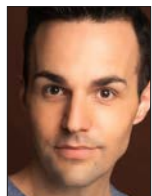
# WHO'S WHO IN THE CAST

the *CNN NYE Commercial* with Anderson Cooper and Andy Cohen, *Ministry of Supply Clothing Commercial*, and *Get Out the Vote Commercial*. Michael also has his own IGTV series *The Collection*. To find out more, follow Michael on IG @michaelharmon. God is GREAT! #BLM.



## DREW PORRETT

(*Pearlie, Dance Captain*) returns for another production of *A Christmas Carol* at NSMT. Other credits include North Shore Music Theatre (Parker, *Freak Friday*), Paramount Theatre (Mike, *Newsies*) Arvada Center (Issachar, *Joseph... Dreamcoat*), Mason Street Warehouse (*Steam Heat*), Arts Center of Coastal Carolina (*Evita*), Rocky Mountain Repertory Theatre (Action, *West Side Story*) and Tibbits Opera House (Will Parker, *Oklahoma!*). He trained at Western Michigan University, and received his B.F.A. in Musical Theatre Performance. Special thanks to Daniel Hoff Agency and his support system back in Michigan! Instagram @drew\_porrett



## BRONSON NORRIS MURPHY

(*Fred, Assistant to the Director*) returns to the role of Fred for his 5<sup>th</sup> holiday season! For NSMT: *Cats* (Gus/Growltiger), *Saturday Night Fever* (Frank Jr.), *West Side Story* (Tony) & *A Christmas Carol* (Fred). Best known for his work with Andrew Lloyd Webber, Bronson played The Phantom in the US premiere of *Love Never Dies: The Phantom Returns*. Broadway: *The Phantom of the Opera*; Tour: *Cats* Regional: *Unmasked: The Music of Andrew Lloyd Webber* (World Premiere - Papermill); *Evita* (New York City Center Gala Production). As a concert artist, Bronson frequently sings with symphonies all over the United States and Canada and currently serves as the Associate

Artistic Director of Kentucky's Official Outdoor Musical: *The Stephen Foster Story*. For more, visit BronsonNorrisMurphy.com. @BronsonBiz



## ALLSUN O'MALLEY

(*Belle*) is delighted to return to NSMT for the holiday season! Other credits include: Paper Mill Playhouse's *Chasing Rainbows: The Road to Oz* (Young Mary Jane, u/s Deanna Durbin); Theatre by the Sea's *Singin' in the Rain* (Kathy Selden); The New London Barn Playhouse's *A Grand Night for Singing* (Lynne/Dance Captain), *Newsies* (Katherine), and *How to Succeed in Business...* (Rosemary); and Wagon Wheel Theatre's *My Fair Lady* (Eliza). Penn State BFA Musical Theatre. Endless thanks to Kevin, Matthew, and the entire cast and creative team! Instagram: @allsunomalley



## J.T. TURNER

(Mr. Fezziwig/*Man 2*, u/s Ebenezer Scrooge & Jacob Marley) is honored to return to A Christmas Carol for his 11th year. His stage credits include *All Shook Up* here at NSMT, *Anything Goes* and *La Cage* at Reagle Music Theater, *Tosca* with Boston Lyric Opera, *Man of LaMancha*, *City of Angels*, *Kiss Me Kate*, at Lyric Stage, *Floyd Collins*, *Triumph of Love*, *Saturday Night* and *Chess* at Speakeasy Stage. J.T. tours (in person and on Zoom), in shows about Robert Frost, Charles Dickens, John Muir, Ben Franklin and Will Shakespeare. He is Descriptive Narrator for the PBS shows "Arthur," "Martha Speaks," "Nova" and "Mystery!" His film/TV work includes *Ava*, *The Crucible*, *Last Poker Game*, *Brotherhood*, *Dark Things*, *Polka King*, and the upcoming *Don't Look Up*. Love to Marci and the kids. jtturner.org

# WHO'S WHO IN

# THE CAST



## **TOMMY BETZ**

(*Dick Wilkins, Ensemble, s/c Old Joe*) is thrilled to be making his NSMT debut! National Tour: *The Sound of Music*; Regional: Forestburgh, Engeman, Fulton. Special thanks to

Matthew and the entire creative team! Call your senators at 866-832-1560 and ask them to pass the PRO Act. @tommybetz



## **BILLY GOLDSTEIN**

(*Old Joe, Ensemble, s/c Ghost of Christmas Future/Young Scrooge*) is beyond thrilled to be back at NSMT! As a New York City based actor and a native to the North Shore himself, Billy grew up seeing his first shows at NSMT and is excited to get back to his roots.

Regional credits include: *Curious George and the Golden Meatball* (Chef Pisghetti), *Chicago* (Amos Hart), *La Cage Aux Folles* (Albin), *The Addams Family* (Uncle Fester), *South Pacific* (Stewpot). Billy wants to thank his friends, family and Dan for constant and continued support, PaceMT'16, Bret Adams LTD and North Shore Music Theatre for giving him such an amazing experience & opportunity.

## **JAELE LAGUERRE**



(*Ensemble, s/c Meg & Ghost of Christmas Past/Mrs. Cratchit*) has been a longtime fan of NSMT and is thrilled to be making her debut with the theatre. She recently graduated from Syracuse University with her BFA (Go Orange!) and is excited to be in the theatre performing after this past year. Professional credits include *Little Shop of Horrors*, *Ain't Misbehavin'*, *Rent*, and *Joseph and the Technicolor*. Thanks to her family and the NSMT team!

jaellelaguerre.com



## **TURNER RILEY**

(*Meg, Ensemble, s/c Belle*) They/Them. Turner is absolutely thrilled to be back with their NSMT family performing this magical show. Nat'l Tours:

*Sound of Music* (Elsa Schraeder), *Ragtime the Musical* (Mother), *Camelot* (Nimue). Off-Bway: *Rathskeller, The Jury. Select Regional: Oklahoma* (Laurey), *Mamma Mia!* (Donna), *The Full Monty* (Georgie), *Ragtime* (Ogunquit Playhouse- IRNE Award), *Newsies* (Hannah), *A Christmas Story* (Mother), *The Little Mermaid* (Aquata), *Legally Blonde* (Elle Woods), *A Chorus Line* (Val), *All My Sons* (Anne Deever).

@theyturnerriley



## **EMILY ROYER**

(*Ensemble, s/c Mrs. Dilber / Mrs. Fezziwig*) is so excited to be a part of *A Christmas Carol*. New York Theatre: *Masquerade: The Music of Andrew Lloyd Webber* (Woman 3-

Lead/NY Premiere) Regional: *Spelling Bee* (Olive Ostrovsky), *Cabaret* (Helga, U/s Sally Bowles), *High School Musical* (Gabriella), *Music Man, Joseph...* among others. BFA, CCM. Huge thanks to Brian at HKA, her incredible teachers, and endless love to all her friends and family! @emilyannroyer



## **DAN TEIXEIRA**

(*Ensemble, s/c Man 1 & Man 2*) is thrilled to be joining NSMT for the first time this holiday season! He is a proud graduate from Penn State Musical Theatre. Most recently he

spent a 'summer under the stars' at the New London Barn Playhouse. Thanks to Kevin, Milton, Matthew and the entire NSMT team for welcoming him into this community; and to his parents, Claudio and Gabriela, for their continued trust and support.

www.danteixeira.com

# WHO'S WHO IN THE CAST



## JACK BAUMRIND

(*Boy Scrooge*) is excited to return to NSMT for his second production of *A Christmas Carol*, playing Tiny Tim (2019). Credits include *James and the Giant Peach* at Wheelock

Family Theater; *Runaway Bunny* and *Charlie Brown Christmas* at BCT and several Massachusetts-based films. Thank you to NSMT for another exciting opportunity!



## LYDIA BOGDANOVITCH

(*Fan*) is thrilled to be making her NSMT debut in this year's 30th production of *A Christmas Carol*. Lydia is an eighth grader from Wellesley. Her recent performances include *Pinkalicious* (Alison), Ogunquit Playhouse and *The Lion King* (Sarafina), Weston Drama

Workshop. She has also performed in *The Nutcracker* at Walnut Hill. Lydia would like to thank her family, OPH and NSMT for this amazing opportunity. Merry Christmas to all!

Workshop. She has also performed in *The Nutcracker* at Walnut Hill. Lydia would like to thank her family, OPH and NSMT for this amazing opportunity. Merry Christmas to all!



## ISABELLA CARROLL

(*Belinda Cratchit*) of Lynnfield is thrilled to be back at North Shore Music Theatre! Credits: Jane Banks, *Mary Poppins*, CIG; Little Girl, *Ragtime*, Salem State; Belinda Cratchit A

*Christmas Carol*, NSMT; Ngana, *South Pacific*, Cape Playhouse; Child, *Evita*, NSMT, National Anthem Boston Celtics and Bruins. Bella studies voice with Noel Smith, acting with Jacqueline Piro, dance at Refine Studio, plays basketball, NEFC DPL soccer and LHS Varsity soccer. Thank you, Mom, Dad, Anthony, Noel, Jacqui, Briana, Bill, Karen, family, friends and Matthew and Kevin, for this wonderful opportunity!

Trust me to help you—  
from coffee to closing!



**COLDWELL  
BANKER  
REALTY**

**David Brown** *The Gentleman*  
**REALTOR®**

c. 617.594.0901 o. 978.927.1111

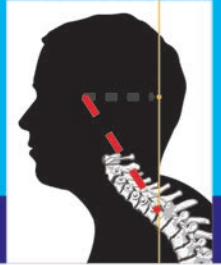
David.Brown@NEMoves.com

**DavidBrownNorthShoreHomes.com**

50 Dodge Street, Ste. 105  
Beverly, MA 01915

## ARE YOU SHIFTED?

Chronic health issues can sometimes be related to a structural abnormality with the spine



### COLLATERAL DAMAGE

- Tension Headaches
- Muscle Pain
- Immobility
- Dizziness
- Low Energy
- Poor Sleep
- Shoulder Pain
- Joint Pain
- Digestive Dysfunction
- Degenerative Disc Disease
- Degenerative Joint Disease
- Migraine Headaches
- Muscle Tension

Visit [beverlychiropractic.com](http://beverlychiropractic.com) for your FREE Posture Self-Assessment Tool

**Beverly Family**  
chiropractic

978-927-5880  
72 Sohier Rd.  
Beverly, MA

# WHO'S WHO IN THE CAST



## **JOSHUA MCKENNA**

(*London Boy*) returns to NSMT after playing Fletcher in 2019 production of *The Bodyguard*. Joshua is currently a fourth grader at the Cove Elementary School in Beverly MA. Joshua

is currently a student with Ginger Bess. Joshua would like to thank his family and friends for all the support he has. Happy Holidays to all!



## **QUINN MURPHY**

(*Tiny Tim*) is thrilled to make his NSMT debut; Nine-year-old Quinn, from Reading, has been acting with New England School of Performing Arts (NESPA, N. Reading, MA) for

the last four years. Quinn loves art, music, and lots of trampoline time. He's grateful for support from NESPA, Joshua Eaton, and friends & family, especially Brady & Devlin.



## **AXEL SIMONS**

(*London Boy*) is excited to be making his North Shore Music Theatre debut! He loves to sing and play the piano but mostly considers himself a professional "gamer". His last

role was Michael in *Peter Pan* at the Ogdon Egyptian Theatre. He was also a featured singer in the Kelli O'Hara concert at Dayne's Music Hall. And his first role was the King in *Rumpelstiltskin* in his school play in third grade. Love to Jude, Mom and Dad.



## **EMILIA TAGLIANI**

(*Martha Cratchit*) is thrilled to be returning to NSMT! Credits include: *Little Women* (Amy March) Wheelock Family Theatre, *13 Musical* (Patrice) Acting Out, *Beauty & the Beast*

(Belle) GBSC Youth, *A Christmas Carol* (Fan

2017, Martha 2019) NSMT. Huge thanks to Kevin, Matthew, & the ACC family, and Love to her family and friends for their endless support!



## **WADE GLEESON TURNER**

(*Peter Cratchit*) is excited to return to NSMT after playing Boy Scrooge in *A Christmas Carol* in 2018. Recent credits: *A Christmas Carol the Musical* (Seacoast Repertory Theatre),

*Billy Elliot the Musical* (Firehouse Center and Seacoast Repertory Theatre), *The Sound of Music* (Reagle Music Theatre). Many thanks to his supportive family/friends, Noel, and NSMT!

**JON KIMBELL** (*Adapter*) is a producer in residence for SenovVA, Inc. a design and management company offering services to the entertainment, special event, architectural/construction and media services industries with offices in Los Angeles, New York City, Toronto and Dublin. As Artistic Director for North Shore Music Theatre for 25 years retiring in 2007, he helped develop over 60 musicals, including *Memphis*, winner of four 2010 Tony Awards, including Best Musical. Kimbell produced *Langston in Harlem*, an original musical that opened Off-Broadway winning four 2010 Audelco Awards, including Best Musical. Audelco Awards celebrate excellence in Black Theater. Kimbell has received the Elliot Norton Award and the New England Theatre Conference Award for Outstanding Achievement in American Theatre; Salem State College's Lifetime Achievement Award; the Moss Hart Award and the 2010 Spotlight People's Choice Award for his musical adaptation of *A Christmas Carol* in addition to several awards for his work promoting tolerance and diversity. A champion of new works, Kimbell served as Vice Chair for the New York Music Theatre Festival and on the National Alliance for Musical The-

# WHO'S WHO IN THE CAST

atre's New Works Committee. He has served as a panelist and evaluator for the National Endowment for the Arts, New Hampshire Commission on the Arts, Massachusetts Cultural Council, Maine State Council on the Arts and Humanities, Ohio Arts Council, and the Cultural Arts Council of Houston. He currently chairs Somerset Cultural Planning, a project of the Wesserunsett Arts Council, which is developing a cultural plan for Somerset County, Maine as well as serving as Chair of the Skowhegan Opera House Renovation Committee.

**KEVIN P. HILL** (*Director and Choreographer, Producing Artistic Director*). Born and raised in Waltham, Massachusetts, Kevin began his theatrical career as dancer and actor. He appeared in National Touring companies of *Hello, Dolly!* with Carol Channing, Leslie Uggams and Michele Lee, *Anything Goes* and the International Touring Company

of *A Chorus Line*. New York audiences have seen him in the Off-Broadway production of *Party*. Regional credits as a performer include: *West Side Story*, *Good News! A Chorus Line*, *My Fair Lady* and *Marvin in Falsettoland*. Kevin has directed and choreographed over 100 productions across America. He has had the privilege of working with such stars as Marin Mazzie, Joanne Worley, Kathleen Turner, Josh Groban, Jonathan Groff and Tony Award winner, Cady Huffman. In New York, he was the assistant to the director of *On the Twentieth Century* at the New Amsterdam Theatre and assistant to the choreographer on the revival of *Guys and Dolls*. He directed and choreographed *Mamma Mia!*, *Sunset Boulevard*, *Jersey Boys*, *A Christmas Carol*, *Young Frankenstein*, *Mary Poppins*, and *Sister Act* here at NSMT and *Mamma Mia!*, *Smokey Joe's Cafe*, *Sister Act*, *Young Frankenstein*, *Mary Poppins*, and *Grease* at Bill Hanney's Theatre By The Sea in Rhode Is-

**TRAFFIC and WEATHER**  
**Together on the 3s**

**Breaking News**  
**When it Happens**

**WBZ NEWSRADIO 1030**

**NEW ENGLAND'S  
TRUSTED SOURCE  
FOR NEWS AND  
INFORMATION**

**WBZ 1030**  
**NEWS RADIO**

**IHEART.COM**

# WHO'S WHO IN THE CAST

land, where he is also Producing Artistic Director. Kevin has been nominated as Best Director/Choreographer for his work on *Smokey Joe's Cafe*, *Rent*, *The Full Monty*, *Chicago*, and *Edwin Drood*, and was awarded the NH Theatre Award for Best Choreography for *West Side Story* at the Papermill Theatre. Kevin has also been awarded Six Broadway World awards and two Motif awards for his productions of *Mamma Mia!*, *Mary Poppins* and *Young Frankenstein*. Future projects include an original danced play called *Standing Still*. As a Professor of Dance, Kevin has been on faculty at Pennsylvania State University, Kansas State University and most recently The Boston Conservatory of Music. Kevin is a proud member of SDC, AEA and Dance Masters of New England, Chapter 5.

**MILTON GRANGER** (*Music Director*) returns to North Shore Music Theatre having previously music directed *Sunset Boulevard*, *Jersey Boys*, *A Christmas Carol* ('14 - '18), *Hairspray*, *Jekyll & Hyde*, *Mame*, *42nd Street*, *Young Frankenstein*, *The Music Man*, *West Side Story*, *Singin' in the Rain*, *Mary Poppins*, *Saturday Night Fever*, *Anything Goes*, *Cats* and *Swing!*. As pianist/conductor: Broadway: *Mary Poppins*, *The Woman in White*, *Chitty Chitty Bang Bang*, *Cyrano the musical*, and *Camelot* (with Robert Goulet). National Tours: *Phantom of the Opera*, *Big*, *Sunset Boulevard*, *Camelot*. International: *West Side Story*. Over 100 regional productions at North Shore Music Theatre, Baltimore CenterStage, Westchester Broadway Theatre and others. Work as composer/lyricist: Two First Prizes in National Opera Association new chamber opera competition; eight chamber operas, performed regularly throughout U.S. and Canada. Several produced musical plays, including *Castle Walk* (NYMF Next Link Selection), and *Peter Rabbit and the Garden of Doom* (winner, Actors' Playhouse competition). [miltongranger.com](http://miltongranger.com)

**HOWARD C. JONES** (*Original Scenic Design*). Past NSMT design credits include *Disney's The Little Mermaid*, *Legally Blonde*, *My Fair Lady*, *Bye, Bye Birdie*, *Contact*, *Forever Plaid*, *Hairspray*, *Singin' in the Rain* '05, '92, *Fame*, *Swing!*, *Cats*, *Chicago*, *Footloose* '02, *Carousel*, *Sweet Charity*, *Student Prince*, *Victor Victoria*, *Annie*, *Carnival*, *Crazy For You*, *Will Rogers Follies*, *Phantom*, *Showboat*, *South Pacific*, *Brigadoon*, *City of Angels*, *Guys and Dolls*, *Nunsense 2*, *How to Succeed in Business Without Really Trying*, *Camelot* '91 and the annual production of *A Christmas Carol*. Mr. Jones is Director of Scene Painting at the N.C. School of the Arts. Before that he was the founder and owner of Cobalt Studios, an apprentice painting studio, in upstate New York. Other credits include *Goodspeed Opera*, *Starlight Theatre*, *Missouri Repertory Theatre*, *CLO* in Pittsburgh, *Merrimack Repertory Theatre*, *Weston Playhouse*, *Virginia Opera* and the *American Heartland Theatre*. Mr. Jones was proud to be included in the *World Stage Design Expo 2005*. He received the *Elliot Norton Award* for Outstanding Designer in June 2000 and several times has been awarded *Best Design* by *KC Drama Desk*.

**KELLY BAKER** (*Costume Coordinator and Additional Costume Design*) is so happy to back with her Christmas family! She is a graduate of Bridgewater State College. Previous NSMT Costume Design/Coordinator credits include: *Mamma Mia!* ('21, '18), *The Bodyguard*, *Sunset Boulevard*, *Jersey Boys*, *Freaky Friday*, *Oklahoma!*, *Curious George and the Golden Meatball*, *A Christmas Carol*, *Hairspray*, *Jekyll & Hyde*, and *Peter Pan*. Other companies she has worked for include: The Boston Conservatory at Berklee, New England Conservatory, Greater Boston Stage Company, *Odyssey Opera*, *The Cape Playhouse*, *Commonwealth Shakespeare Company*, *Theatre By The Sea*, and *OIV's Ouroboros Trilogy*. Thank you to Kevin, Karen,



# WHO'S WHO IN THE CAST

Matthew and the amazing NSMT Wardrobe Crew for all that they do! Hi Mama!

**JACK MEHLER** (*Lighting Design*). Previous work with NSMT includes Scenery & Lighting for *Jekyll & Hyde* (2018, IRNE nomination), *Singin' in the Rain* (2016), *Billy Elliot The Musical* (2015), *Miss Saigon* (2013), Scenery for *West Side Story* (2003), and Lighting for *Oklahoma!*, *A Christmas Carol* ('02-'19; 2012 IRNE nomination), *Annie*, *Camelot* (IRNE nomination), *Children of Eden*, *42nd Street*, *Funny Girl*, *Gypsy*, *Hairspray*, *High School Musical*, *Jesus Christ Superstar*, *The King and I*, *A Little Night Music*, *My Fair Lady*, *Nine* (IRNE nomination), *Ragtime*, *The Producers*, *Thoroughly Modern Millie*, *West Side Story* (2016), *Wizard of Oz*, and *Young Frankenstein*. He received the 2012 (*Elisabeth*) and 2013 (*Rebecca*) Korean Musical Theatre Awards (Korean Tony) for Lighting Design of the Year. Other Theatre design credits include Walnut Street Theatre, Paper Mill Playhouse, Manhattan Theatre Club, Riverside Theatre, Cleveland Play House, Seattle Rep, Syracuse Stage, Weston Playhouse, The Working Theatre and WPA among many others. Dance: Joffrey Ballet, Lar Lubovitch, Alvin Ailey American Dance Theatre, San Francisco Ballet, Donald Byrd/Spectrum Dance, Hubbard Street Dance Chicago, Jose Limon, Ballet Memphis and others. Jack also provides owner's design representation for organizations building or renovating performance and rehearsal spaces and is on the Board of ACT of Connecticut where he received Broadway World Connecticut awards for both scenery and lighting design for *Evita*.

**LEON ROTHENBERG** (*Sound Design*). NSMT: *All Shook Up*, *Wizard of Oz*, *Les Misérables*, *Saturday Night Fever*, *Singin' in the Rain*, and *A Christmas Carol* since 2012. Select Broadway: *Hillary and Clinton*, *Waverly Gallery*, Mike Birbiglia's *The New One*, *The Boys in the Band*, *A Doll's House Part 2*, *Violet*,

*The Realistic Joneses*, *The Nance* (Tony Award), *The Heiress*, *Joe Turner's Come and Gone* (Tony Nom). Regional: Pasadena Playhouse, The Wallis (LA), Spoleto Festival, Huntington, A.C.T., Portland Center Stage, Arena Stage, Seattle Rep, La Jolla Playhouse, Old Globe, Folger Shakespeare Library, Long Wharf, McCarter, Williamstown Theater Festival, Hudson Valley Shakespeare Festival, Merrimack Repertory, Delaware Theater Company, New York Stage and Film, Two River Theater, Theatre By The Sea. Select New York/Off-Broadway: Second Stage, New York City Center, Manhattan Theatre Club, Public Theater, Culture Project, Tectonic. Tours/International: *Dirty Dancing: The Classic Story Onstage*, *Cirque du Soleil*. klaxson.net

**GERARD KELLY** (*Original Wig and Hair Design*) Broadway: *Disney's The Lion King* (Tony© Award - Best Musical), *Hair* (Tony© Award - Best Revival of a Musical). Gerard's hair and wig design has been seen at North Shore Music Theatre since 1999 as well as many other Regional Theatre's and Shakespeare Festivals across the country. Gerard has also created many wigs for performers such as Harvey Fierstein, Felicity Huffman, Laura Linney, Marlo Thomas, The B-52's (including the cover of their album *Funplex*), Varla Jean Merman, Charles Busch, S.Epatha Merkerson, Jennifer Holiday, RuPaul, Whoopi Goldberg, and The Lady Bunny. Gerard's work can be seen in films such as *Transamerica*, *Girls Will Be Girls*, *The Ten*, *The Savages*, *King Bolden*, *Notorious*, *The Conjuring* and *The Other Woman*

**STEPHEN MacDONALD** (*Production Stage Manager*) is thrilled to be working on another production with North Shore Music Theatre. Recent stage management credits include *Mamma Mia!* at North Shore Music Theatre and Theatre by The Sea, *A Year with Frog and Toad TYA* and *Curious George and the Golden Meatball TYA* with North Shore



# WINTER • SPRING • SUMMER THEATRE ARTS CLASSES

*At this time, we are requiring masks and proof of vaccination.*

## FOR KIDS

### WINTER

#### MUSICAL THEATRE WORKSHOP

MONDAYS: January 10 - March 14  
4pm-6pm

Ages: 8 to 11 • Ages: 12 to 15

#### ACTING AND IMPROV CLASS

SATURDAYS: January 8 - March 5

- 9am - 10am: age 8 - 11
- 10am - 11am: Middle School
- 11am - 12pm: High School

### SPRING

#### MUSICAL THEATRE WORKSHOP

MONDAYS: April 4 - June 6  
4pm-6pm

Ages: 8 to 11 • Ages: 12 to 15

### SUMMER



#### Disney's THE LITTLE MERMAID, JR. 3-WEEK INTENSIVE

July 11 - July 29 • Mon - Fri 9am - 3:30pm  
Performances: July 29th • 10am and 2pm

## FOR ADULTS AGES 19 AND UP

### WINTER

MONDAYS • January 10 - March 7

DANCE: **BEGINNER TAP** • 7:30pm - 8:30pm  
ACTING: **IMPROV FOR THE STAGE** • 7pm-9pm

TUESDAYS • January 11 - March 1

DANCE: **ADVANCED BEGINNER/  
INTERMEDIATE TAP** • 7:30pm - 8:30pm  
ACTING: **BEGINNER ACTING:  
Scene Study** • 7pm-9pm

### SPRING

MONDAYS • March 28 - May 16

DANCE: **BEGINNER TAP** • 7:30pm - 8:30pm  
ACTING: **IMPROV FOR THE STAGE** • 7pm-9pm

TUESDAYS • January 11 - March 1

DANCE: **ADVANCED BEGINNER/  
INTERMEDIATE TAP** • 7:30pm - 8:30pm  
ACTING: **BEGINNER ACTING: Musical Theatre  
Scenes Into Songs** • 7pm-9pm

### SUMMER

SESSION 1: MONDAYS • June 6 - July 18

DANCE: **BEGINNER/  
INTERMEDIATE TAP** • 7pm-8pm  
DANCE: **BEGINNER MUSICAL  
THEATRE DANCE** • 7pm-8pm  
ACTING: **SHAKESPEARE  
IN THE COURTYARD** • 7pm-9pm

SESSION 2: TUESDAYS • July 25 - August 29

DANCE: **BEGINNER/  
INTERMEDIATE TAP** • 7pm-8pm  
DANCE: **BEGINNER MUSICAL  
THEATRE DANCE** • 7pm-8pm  
ACTING: **IMPROV** • 7pm-9pm

\*\* NSMT classes are subject to changes or cancellations.

information & registration at [nsmt.org/education](https://www.nsmt.org/education)

# WHO'S WHO IN THE CAST

Music Theatre along with *Admissions*, *Choir Boy*, and *The View Upstairs* with Speakeasy Stage Company of Boston. When not working professionally as a proud AEA stage manager, Stephen spends his time directing and designing education productions, while teaching the future generations of performing and technical theatre artists.

**DAKOTAH WILEY HORAN** (*Assistant Stage Manager*) is thrilled to be back having worked as the Assistant Stage Manager on *A Christmas Carol* '16 - '19, *Mamma Mia!*, *The Bodyguard*, *Sunset Boulevard*, *Jersey Boys*, *Freaky Friday*, *Oklahoma!*, *Hairspray*, *Jekyll & Hyde*, *Mamma Mia!*, *Peter Pan*, *Mame*, *42nd Street*, *Evita*, *Young Frankenstein*, *Disney's Beauty and the Beast*, *The Music Man*, *West Side Story*, *Spamalot* and *Singin' In The Rain*, and as the Production Assistant for *Mary Poppins* and *Funny Girl*. Some of her previous Stage Management credits include: Capital Repertory Theatre: *Betrayal*, *Marvelous Wonderettes*, *Cactus Flower*, *33 Variations*, *Leslie Uggams in Uptown Downtown*, *Man of La Mancha*, and *Single Girls Guide*. Pendragon Theatre: *Clean House*, and *Twelve Angry Men*. She would like to thank her parents for instilling and encouraging her love of theatre, and to her friends and her North Shore family for always supporting her.

**BRIANA FALLON** (*Assistant to the Choreographer*) is thrilled to return for her third Christmas season! Other NSMT credits: *Mamma Mia!* ('21, '18), *Mary Poppins*, *Beauty and the Beast*, *Freaky Friday*, *Young Frankenstein*, *Singin' in the Rain*, *Billy Elliot*, *Saturday Night Fever*. Briana has also performed in New York City with *Anything Goes* and *Funny Face*. BFA from The Boston Conservatory in Musical Theatre. During the pandemic, she opened her own dance studio, Refine Dance Studio, located here on the north shore. A huge thank you to Kevin, Matthew, and Bill! Love to David, Mom, Dad,

family, and friends. Instagram: @briana\_fallon

**ROBERT L. RUCINSKI** (*Assistant Music Director/Rehearsal Pianist*) is thrilled to be returning for his 15<sup>th</sup> production of *A Christmas Carol* having been part of the show's creative team since 2004. Past NSMT Assistant Music Director credits include *Sunset Boulevard*, *Jersey Boys*, *Freaky Friday*, *Oklahoma!*, *A Christmas Carol* '04-'07 & '10-'18, *Hairspray*, *Jekyll & Hyde*, *Peter Pan*, *42nd Street*, *School House Rock Live Jr.* (MD), *West Side Story*, *Singin' in the Rain* '06 & '16, *Les Misérables*, *The Little Mermaid*, *The King and I*, *Forever Plaid*, *Seven Brides for Seven Brothers*, *Crazy for You*, *Cinderella* '05-'06, *Ain't Misbehavin'*, *Damn Yankees*, *Camelot*, *Fame*. Robert has been music director at many theaters throughout New England and teaches at several high school and university theater programs in the local area. A native of Jersey City, NJ, he now lives in Arlington, MA. More info at [RucinskiMusic.com](http://RucinskiMusic.com).

**BILL HANNEY** (*Owner/Producer*) is honored and proud to have been responsible for both the 2007 purchase and re-opening of Theatre By The Sea ([theatrebythesea.com](http://theatrebythesea.com)), the landmark 500 seat professional summer theatre and restaurant in Wakefield, RI and the 2010 purchase and re-opening of North Shore Music Theatre ([nsmt.org](http://nsmt.org)), the 1,500 seat nationally renowned regional theatre in Beverly, MA.. He began his career in show business at age 19, leasing and developing movie theaters, including his first multiplex in Quincy, Massachusetts. Before long, he was booking rock shows (Jefferson Starship, Rush) and other types of live entertainment, which eventually led to the presenting and producing of Broadway productions. One such show was an appearance by the legendary mime artist, Marcel Marceau. As president of Broadway Productions, Bill presented national tours such as *Annie*, *Ama-*

# WHO'S WHO IN THE CAST

*deus, Dancin', Peter Pan, The Rocky Horror Show* and *Mark Twain* starring Hal Holbrook, throughout New England including Worcester, Springfield, Portland, Maine and Boston. Throughout his career, Bill has stayed focused on his movie theatre chain having bought, built, owned, operated and sold more than 30 cinemas. His company, Entertainment Cinemas, currently operates seven movie complexes in four states. In 2009, Bill was elected President of the Theatre Owners of New England. Bill's ongoing work with NSMT inspires him to consider acquiring additional performance venues at which he plans to someday share his productions between his theatres. Bill has been named to the North Shore Top 100 by the North Shore Chamber of Commerce. In 2012, he was recognized by both the Beverly Chamber of Commerce and Salem Chamber of Commerce as Business Person of the Year. He is the recipient of the 2015 Leslie S. Ray Hall of Fame Award, presented by the Greater Beverly Chamber of Commerce. Bill is a member of the League of Broadway Producers and was involved with the recent revival of *Pippin*, as well as developing several new musicals. Bill also produces Cape Live!, a summer entertainment series at the Barnstable Performing Arts Center in Hyannis.

**MATTHEW CHAPPELL** (*Casting Director*) is honored to continue working with this remarkable creative team as resident Casting Director and Associate Producer for Bill Hanney's North Shore Music Theatre and resident Casting Director for Theatre By The Sea. An accomplished performer, he is fortunate to have worked all over the world in more than 30 productions, including several shows at NSMT, as lead vocalist in *Stephen Schwartz's Magic To Do* for Princess Cruise Lines, and appearances at Feinstein's/54 Below, The Duplex, Carnegie Hall, and The Metropolitan Room. For many years, Matthew worked as a talent agent, casting associate, and photog-

rapher for Heyman Talent Agency, specializing in TV/film, commercials, runway, print and voiceovers. He is a former Associate Producer for Encore International, casting and producing shows for theme parks, cruise ships, and corporate events.

**ACTORS' EQUITY ASSOCIATION** (AEA), founded in 1913, represents more than 45,000 actors and stage managers in the United States. Equity seeks to advance, promote and foster the art of live theatre as an essential component of our society. Equity negotiates wages and working conditions, providing a wide range of benefits, including health and pension plans. AEA is a member of the AFL-CIO, and is affiliated with FIA, an international organization of performing arts unions. The Equity emblem is our mark of excellence. [www.actorsequity.org](http://www.actorsequity.org)

**NORTH SHORE MUSIC THEATRE** (NSMT) Since 1955, NSMT has become one of the most attended theatres in New England, with approximately 250,000 patrons annually. With a national and regional reputation for artistic achievement, NSMT has received numerous industry awards including Elliot Norton Awards, IRNE Awards, the Rosetta Le Noire Award from Actors' Equity, and the Moss Hart Award. NSMT produced the World Premiere of *Memphis* in 2003, the show went on to win four 2010 Tony Awards including Best Musical. Under the new ownership of Bill Hanney in 2010, NSMT continues to annually produce a musical subscription series and an annual production of *A Christmas Carol* along with celebrity concerts, children's programming, and year-round education programs for all ages.

# NORTH SHORE MUSIC THEATRE STAFF

Owner/Producer ..... Bill Hanney  
Producing Artistic Director ..... Kevin P. Hill  
General Manager ..... Karen Nascembeni  
Chief Financial Officer ..... Tom Senter  
Director of Marketing and Communications ..... Mike Ceceri  
Director of Education ..... Kyla Moulton  
Finance Manager ..... Diane Ford  
Finance Associate ..... Jane Fratus  
Corporate & Community Relations  
Associate ..... Kirsten McMahon  
Production Photography ..... Paul Lyden  
Videographer ..... Award Productions  
Accounting Firm ..... CompCo Associates  
Legal Counsel ..... Tom Alexander of Alexander & Femino

## PRODUCTION

### PRODUCTION ADMINISTRATION

Associate Producer/Casting Director/  
COVID Compliance Officer ..... Matthew Chappell  
Production Manager ..... Daniel T. Simons  
Associate Production Manager ..... Scott G. Nason  
Company Manager/  
COVID Compliance Officer ..... Mat Stanley  
Musician Contractor ..... Jay Daly

### SCENE SHOP

Technical Director ..... Mark Vagenas  
Assistant Technical Director (Interim) ..... Emily O' Sullivan  
Master Welder ..... Abbey Kulhavy  
Carpenters ..... Derek Hodge  
Crew Leads ..... Mike Gove, Emily O'Sullivan  
Load-in Stage Crew ..... Andrew Duggins, Adam Nicol,  
Abbey Kulhavy, Ben Florance, Myles O'Connor

### PAINT SHOP

Scenic Charge ..... Sasha Seaman

### PROP SHOP

Props Master ..... Emily O' Sullivan  
Assistant Props Master ..... Adam Nicol

### ELECTRICS

Lighting Supervisor ..... Sheila Donovan  
Spotlight Operators ..... Shannon Coulter, Michelle Murray,  
Brian Hutchins, Johanna Cheshire  
Electricians ..... Brendan Marr, Shannon Colter,  
Hannah Greenberg-MacKay

### SOUND

Sound Supervisor (Interim) ..... Nick White  
A2 ..... Kevin Corzett

### PROJECTIONS

\*Projections Operator ..... Tyler Seegars

### COSTUMES

Costume Shop Manager ..... Kelly Baker  
Wardrobe Supervisor ..... Kat Shanahan  
Assistant Costume Shop Manager ..... Joellen Olari  
Wardrobe Crew/Stitchers ..... Joey Pisano,  
Amanda Ostrow Mason, Rebecca Glick, Kam Dunn

## STAGE MANAGEMENT

Production Stage Manager ..... Stephen MacDonald\*  
Assistant Stage Manager ..... Dakotah Wiley Horan\*  
Production Assistant ..... Abby Ray  
\*Members of Actors' Equity Association

## STAGE OPERATIONS

Mechanics Operator ..... Ben Florance  
Run Crew ..... Andrew Duggins, Emily O'Sullivan,  
Adam Nicol, Myles O'Connor,  
Hannah Greenberg-MacKay, Derek Hodge,  
Abbey Kulhavy, Jackie Olivia, Sasha Seaman

## PATRON SERVICES

Director of Patron Services ..... Suzanne Kendall  
Box Office Customer Service Reps ..... Carol Dempsey,  
Jaclyn Rosenberg, Jean Souza,  
Lauren Foster, Nancy Jewell  
Bar/Concession Staff ..... Chris Kendall, Erin Gardner  
Jim Coble, Erin Gardner, Kathy Place,  
Matt Berbrick, Paula Guptill,  
Pam Morose, Marielle Sabbag  
House Manager ..... Jackie Rapisardi  
Ushers ..... Hannah Alsop, Jacquelyn Benus,  
Joann Berkson, Ann Berman, Grace Bigus,  
Mary Carey, Dianne Carter, Anna Craig,  
Nancy Jo Delaney, Constance Fabello,  
John Filip, Diane Gordon, Ruth Greco,  
Mary Jarmolowicz, Dorrie Kimkaran,  
Katie Linares, Cindy Maguire, Louise McKenna,  
Ginny Mocerri, Gloria Nicastro, Linda O'Keefe,  
Mary O'Shea, Dotty Pinkham, Paula Pobiedzinski,  
Linda Repucci, Susan Rizzo, Susan Rogers,  
Harriet Sant Fournier, Robere Sant Fournier,  
Jane Theodore, Carol Willens

## FACILITIES

Director of Facilities ..... Heather Romani  
Facilities Managers ..... Rick Dunn  
Facilities Crew ..... Chanel Call, Chris Moudarri  
Parking Attendants ..... Janessa Benzar, Dave Fortado,  
Kay Fortado, Tim Geary, Jerome Guillebe,  
Kara Hersey, Bruce Johnson, Anthony Johnson,  
Patrick Johnson, Owen Keves, Bob Laws,  
Candy Melanson, Ryan Munzing, Andrew Samperi,  
Luke Samperi, Erin Perry, Hunter Spencer,  
Dakota Sprankle, Makayla Sprankle, Kaitlyn Wilson

# 2021 CORPORATE CIRCLE

NSMT thanks the following organizations for their leadership through corporate support.

## 2021 SHOW SPONSORS



BEVERLY • NORTH ANDOVER • METHUEN • SWAMPSCOTT

A CHRISTMAS CAROL 2021

### PRODUCER



Broadway Club Sponsor



Concert Series Sponsor

### CHOREOGRAPHER



### CONDUCTOR



Official Draft of Broadway Club



Education Dept Underwriter

### OUT AT THE NORTH SHORE



Premier Sponsor



Your Four Season Gateway



BEVERLY ATHLETIC CLUB

Official Gym



### ACTOR WELCOME BAG

### HOTEL PARTNER



### SPECIAL THANK YOU TO OUR PREFERRED VENDORS



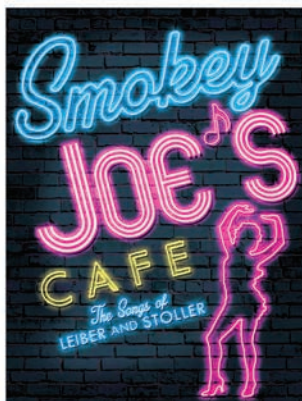
To find out more about North Shore Music Theatre corporate memberships, please contact:  
Karen Nascembeni, General Manager | 978.232.7200 x7240 | karen@nsmt.org

SCAN THIS QR CODE TO VIEW & DOWNLOAD THE FULL PROGRAM FOR THIS SHOW

1. Open the Camera or QR Code reader on your phone.
2. Hold your device over a QR Code so that it's clearly visible within your smartphone's screen. Two things can happen when you correctly hold your smartphone over a QR Code. The phone automatically scans the code.
3. If necessary, press the button. Presto!

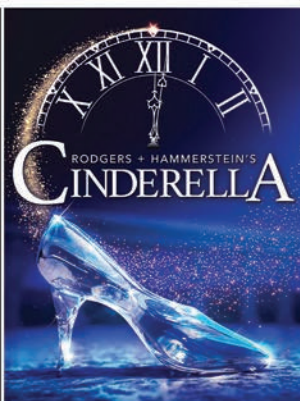


FULL PROGRAM ALSO AVAILABLE ONLINE: [WWW.NSMT.ORG/ACHRISTMASCAROL](http://WWW.NSMT.ORG/ACHRISTMASCAROL)

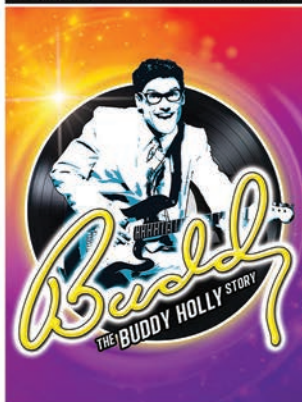


JUNE 7 - JUNE 19, 2022

The Fabulous  
**2022**  
Musical Season!



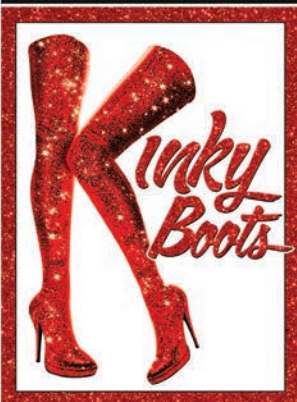
JULY 12 - JULY 24, 2022



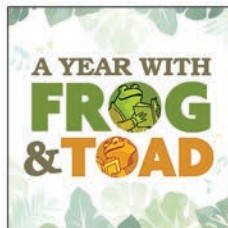
AUG 16 - AUG 28, 2022



SEPT 20 - OCT 2, 2022



OCT 25 - NOV 6, 2022



MARCH 26, 2022 - 11AM



APRIL 8, 2022 - 8PM



APRIL 9, 2022 - 8PM



APRIL 30, 2022 - 8PM

**NORTH SHORE MUSIC THEATRE • NSMT.ORG**  
 978.232.7200 • 54 DUNHAM ROAD • BEVERLY, MA @OFFICIALNSMT