

BILL HANNEY'S
NORTH SHORE
MUSIC THEATRE



RODGERS + HAMMERSTEIN'S
CINDERELLA



JULY 12 - JULY 24, 2022



Are you still on track for retirement?

Investors have survived market swings and corrections before. But a twinge of uncertainty may have you wondering if you should get another opinion to help confirm your wealth is in the right place. That's why we've made it as easy as we can to have a complimentary, face-to-face meeting with a Financial Advisor.

Maybe you just want to know if you're really on track for retirement or if your investments could be better aligned to your goals. Or in the process of working hard for your money, you worry you've overlooked some necessary steps to transfer your wealth.

Whatever's on your mind, we're here to listen, and we'll help you evaluate your plan. It's free, and there's no obligation. Then you can decide if your wealth is getting the care it deserves.

Lee Wealth Management
Group of Wells Fargo Advisors



Gregory J. Lee

Managing Director - Investment Officer

NMLS # 258142

978-524-1642 direct

978-524-4105 fax

800-272-7300 toll-free

138 Conant St, 4th Floor

Beverly, MA 01915

Gregory.lee@wfa.com

<https://fa.wellsfargoadvisors.com/lee-wealth-management-group>

<https://www.linkedin.com/in/gregleewellsfargo>

Investment and Insurance Products:

► NOT FDIC Insured ► NO Bank Guarantee ► MAY Lose Value

BILL HANNEY
Owner and Producer

BILL HANNEY'S
NORTH SHORE
MUSIC THE TRE

KEVIN P. HILL
Producing Artistic Director



Presents
RODGERS + HAMMERSTEIN'S
CINDERELLA

Music by **RICHARD RODGERS**
Lyrics by **OSCAR HAMMERSTEIN II**
New book by **DOUGLAS CARTER BEANE**
Original book by **OSCAR HAMMERSTEIN II**

Starring
MEADOW NGUY STEPHEN BROWER
TODD BUONOPANE JAELE LAGUERRE KEVIN B. MCGLYNN
DWAYNE P. MITCHELL MYCHAL PHILLIPS TREGONEY SHEPHERD
and
JUJUBEE
as Madame

JAMIE ASKEY MAGGIE BERGMAN ZELDA CARMEN BRIANA FALLON
KELLY GLEASON JOEL KAIMAKANI LIBED TYLLER KENKE
RICKY LOFTUS GEORGE BRETT PEDERSON KENNEDY PEREZ GRACIE PHILLIPS
MARIA CRISTINA POSADA SLYE JORDAN STANFIELD AVILON TRUST TATE
JOHN ZAMBORSKY ALEX ZARLENGO

Scenic Design **KYLE DIXON** Original Costume Design **TRAVIS M. GRANT** Lighting Design **COREY WHITTEMORE** Sound Design **DON HANNA**
Hair & Wig Design **RACHEL PADULA-SHUFELT** Costume Coordinator **KELLY BAKER** Assistant Director/Choreographers **BRIANA FALLON & RICKY LOFTUS GEORGE**
Production Stage Manager **STEPHEN MacDONALD** Associate Producer and Casting Director **MATTHEW CHAPPELL** General Manager **KAREN NASCEMBENI**
Music Direction
MILTON GRANGER

Orchestrations by
DANNY TROOB

Music Adaptation & Arrangements by
DAVID CHASE

Direction and Choreography
KEVIN P. HILL

JULY 12 - JULY 24, 2022

Costume package provided by Maine State Music Theatre

CINDERELLA is sponsored by ABIOMED

Rodgers + Hammerstein's CINDERELLA is presented through special arrangement with R&H Theatricals. www.rnh.com



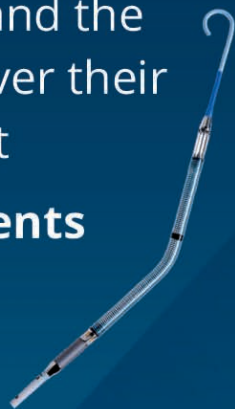


Recovering hearts. Saving lives.

A PROUD SUPPORTER OF THE NORTH SHORE MUSIC THEATRE

Learn more about Abiomed and the people we are helping to recover their native heart function at

www.abiomed.com/patients



To learn more about the Impella platform of heart pumps, including important risk and safety information associated with the use of the devices, please visit <https://www.heartrrecovery.com/important-safety-information#welcomeppci>



THE CAST OF CHARACTERS

(in order of appearance)

Ella	MEADOW NGUY*
Topher	STEPHEN BROWER*
Lord Pinkleton	DWAYNE P. MITCHELL*
Sebastian	KEVIN B. McGLYNN*
Marie	TREGONEY SHEPHERD*
Jean-Michel	TODD BUONOPANE*
Madame	JUJUBEE*
Gabrielle	MYCHAL PHILLIPS*
Charlotte	JAELE LAGUERRE*
Fox	JAMIE ASKEY, JOHN ZAMBORSKY
Raccoon	BRIANA FALLON*, BRETT PEDERSON*
Footman	BRETT PEDERSON*
Driver	JOHN ZAMBORSKY
Lady of Ridicule	MARIA CRISTINA POSADA SLYE*
Knights, Townspeople, Lords & Ladies of the Court, Peasants	JAMIE ASKEY, MAGGIE BERGMAN, ZELDA CARMEN, BRIANA FALLON*, KELLY GLEASON, JOEL KAIMAKANI LIBED, TYLLER KENKE*, RICKY LOFTUS GEORGE*, BRETT PEDERSON*, KENNEDY PEREZ, GRACIE PHILLIPS*, MARIA CRISTINA POSADA SLYE*, JORDAN STANFIELD, AVILON TRUST TATE, JOHN ZAMBORSKY, ALEX ZARLENGO

UNDERSTUDIES & STUDY COVERS

Understudies and Study Covers are never substituted for listed performers unless a specific announcement is made at the time of the performance.

Understudy for: Ella - MARIA CRISTINA POSADA SLYE*;

Sebastian - RICKY LOFTUS GEORGE*; Madame - MYCHAL PHILLIPS*; Gabrielle - GRACIE PHILLIPS*;

Study Cover for: Topher - JOEL KAIMAKANI LIBED; Lord Pinkleton - AVILON TRUST TATE;

Jean-Michel - JOHN ZAMBORSKY; Charlotte - ZELDA CARMEN; Marie - MAGGIE BERGMAN

Production Stage Manager - **STEPHEN MacDONALD***

Assistant Stage Manager - **DAKOTAH WILEY HORAN***

Assistant Musical Director/Rehearsal Pianist - **ROBERT L. RUCINSKI**

Co-Dance Captains - **BRIANA FALLON*, RICKY LOFTUS GEORGE***

* Member of Actors' Equity Association, the Union of Professional Actors and Stage Managers in the United States.

Special thanks to Ricola natural herb cough drops, the official cough drop of North Shore Music Theatre

PLEASE TURN OFF ALL PHONES & ELECTRONIC DEVICES



THE USE OF ANY RECORDING DEVICE, EITHER AUDIO OR VIDEO, AND THE TAKING OF PHOTOGRAPHS, EITHER WITH OR WITHOUT FLASH, IS STRICTLY PROHIBITED.



You don't need a Fairy Godmother to buy and sell your home, just your local Lamacchia Realty REALTOR®!



LAMACCHIAEVERLY.COM
(978) 993-3600

LOCATED IN THE CUMMINGS CENTER



G | GIBLEES MENSWEAR

85 ANDOVER ST., RT. 114, DANVERS
978.774.4080 giblees.com



COME IN ONCE, YOU'LL BE A CUSTOMER FOR LIFE!

SCENES & MUSICAL NUMBERS

There will be one 20 minute intermission.

ACT I

Overture	Orchestra
Prologue	
SCENE 1: Rocky Glen	
"Me, Who Am I?"	Topher, Sebastian, Lord Pinkleton, Knights, Pages
SCENE 1: Outside the Cottage	
"In My Own Little Corner"	Ella
SCENE 2: Throne Room of the Royal Palace	
SCENE 3: Town Square	
"Now Is the Time"	Jean-Michel
"The Prince Is Giving a Ball"	Lord Pinkleton, Townspeople, Madame, Charlotte, Gabrielle, Ella, Marie
SCENE 4: Inside the Cottage	
"Cinderella March"	Orchestra
SCENE 5: Outside the Cottage	
"In My Own Little Corner" (Reprise)/"Fol-De-Rol"	Ella, Marie
"Impossible" - Marie, Ella	
SCENE 6: Flight to the Castle	
"It's Possible"	Marie, Ella
SCENE 7: Ballroom	
"Gavotte"	Sebastian, Topher, Lord Pinkleton, Madame, Charlotte, Gabrielle, the Royal Court
"Ten Minutes Ago"	Topher, Ella
"Cinderella Waltz"	Orchestra
"Ten Minutes Ago" (Reprise)	Topher, Ella, the Royal Court
SCENE 8: Palace Steps	

ACT II

Entr'acte - Orchestra	
SCENE 1: Palace Steps	
"Stepsister's Lament"	Charlotte, Ladies of the Court
SCENE 2: Forest	
"The Pursuit"	Topher, Lord Pinkleton, Lords of the Court, Pages, Ella, Footman, Driver
SCENE 3: Inside the Cottage	
"When You're Driving Through the Moonlight"	Ella, Madame, Charlotte, Gabrielle
"A Lovely Night"	Ella, Madame, Charlotte, Gabrielle
"A Lovely Night" (Reprise)	Ella, Gabrielle
SCENE 4: Forest	
"Loneliness of Evening"	Topher, Ella
SCENE 5: Throughout the Kingdom	
"The Prince Is Giving a Ball" (Reprise)	Sebastian, Lord Pinkleton, Heralds, Madame
SCENE 6: Inside the Cottage	
"There's Music in You"	Marie
SCENE 7: Palace Steps	
"Do I Love You Because You're Beautiful?"	Topher, Ella
SCENE 8: Palace	
"Ten Minutes Ago" (Reprise)	Topher, Ella, The Company
SCENE 9: Royal Gardens	
"Finale"	Marie, The Company

Additional Lyrics by Douglas Carter Bean, David Chase and Bruce Pomahac

THE ORCHESTRA

MILTON GRANGER - Conductor, keyboard 2

ROBERT L. RUCINSKI - keyboard 1; PEGGY FRIEDLAND - flute; MARGO MCGOWAN - clarinet;
RICHARD GIVEN - trumpet; MICHAEL BELLOFATTO - French horn; BRIAN DIEHL - trombone
ZOIA BOLOGOVSKY - violin 1; LISA BROOKE - violin 2; LISA KEMPSKIE - viola
JOHN BUMSTEAD - cello; JOSEPH HOLT - bass; MICHAEL AMBROSZEWSKI - percussion

The musicians in the North Shore Music Theatre Orchestra are members of the American Federation of Musicians

Now Offering Online Booking for All Appointment Types!



Mention NORTH SHORE MUSIC THEATER for 25% off your first cosmetic procedure (new patients only)

Treating all your skin concerns:

- ❖ Newly Updated Medical and Surgical Dermatology Center
- ❖ Full Spectrum of Dermatologic Care From Acne to Advanced Skin Cancer Treatments
- ❖ Board-Certified Dermatologists, highly trained Nurse Practitioners and experienced Medical Aestheticians
- ❖ Offering a variety of minimally and non-invasive cosmetic procedures



CALL OR
SCAN

(978) 525-0100 TO BOOK YOUR VISIT

WHO'S WHO



MEADOW NGUY (*Ella*). Off-Broadway: *Interstellar Cinderella* (Cinderella) at NYCCT. Regional: *White Christmas* (Betty Haynes) at The John W. Engeman Theater; *The Little Mermaid* (Ariel) at Arrow Rock Lyceum Theatre; *The Marvelous Wonderettes* (Cindy Lou) and *Annie* (Sophie, Ms.

Greer) at Alabama Shakespeare Festival; *Jesus Christ Superstar* (Mary Magdalene), *Chicago* (Hunyak), and *Berserker* (Soojin) at Indiana University; *West Side Story* (Fight Captain) at Cardinal Stage Theatre Company; *Spring Awakening* (Martha) at Stray Dog Theatre Company. She was awarded the 2012 Illinois High School Musical Theatre Jimmy Award Female Winner in Chicago. Film/TV: *The Blacklist*; *The Artist's Wife*, *The Honeypt*, *Law and Order SVU*, *Madam Secretary*, and *Hunters*. BFA from Indiana University at Bloomington. meadownguy.com.

@meadow_nguy



STEPHEN BROWER (*Prince Toph*). Broadway: *Anastasia*. First Natl Tours: *Anastasia* (Dmitry), *An American in Paris* (Adam Hochberg), and *Pippin* (u/s Pippin). Stephen most recently appeared in the pre-Broadway production of *Once Upon a One More Time*, a feminist, fairytale

musical set to the music of Britney Spears. Other regional credits include Ogunquit Playhouse, Lyric Theatre of Oklahoma, Connecticut Repertory Theatre, and The Mury. You can find him on Instagram (@stephenbrower) and TikTok (@stephen_brower) where he spends way too much of his time. Tremendous thanks to Kevin P. Hill, and the BRS/Gage team. For my grandmother, Muffinhead, whose hair was always shaped like, you guessed it, a muffin.



JUJUBEE (*Madame*) is an actor at UMass in Amherst, MA, and is delighted to returning to their home state for this production of *Rodgers + Hammerstein's Cinderella* having recently rediscovered their love of live theatre with their critically acclaimed performance of "Summer Raines" in

Death Drop in London's West End. Jujubee is best known for their appearances on the "RuPaul's Drag Race" top 3 finalist on: World of Wonder's "RuPaul's Drag Race Season 2", "RuPaul's Drag Race All Stars" S1 & 5, and BBC's "RuPaul's Drag Race UK vs The World," as well as appearing in the Netflix's original "AJ and the

Queen" and competing on the Paramount+ competition show, "Queen of the Universe." They have two EPs. "Good Juju: Vol 1" which ranked #7 on the iTunes Singer/Songwriter Album Chart and "Good Juju: Vol 2" which peaked at #1. Jujubee has recently released the podcast "Queen of Hearts," whereas host she helps heart-torn strangers find love.



TODD BUONOPANE (*Jean-Michel*). Broadway: Jean-Michel in *Cinderella*, Amos in *Chicago*, Roger in *Grease*, and many characters in *...Spelling Bee*. Off-Broadway: *The Butter & Egg Man*, *Henry & Mudge*, and *The New Yorkers* at Encores! Touring audiences have seen him in *The*

Play That Goes Wrong, *Godspell*, & *Chicago* (which he also performed in Tokyo, Seoul and Dubai.) Regionally, he has performed at the Alliance, The Old Globe, Asolo Rep, MUNY, Signature, Pasadena Playhouse, 5th Avenue, Ordway, Papermill Playhouse, Goodspeed, Maine State and Barrington.TV credits include "Unbreakable Kimmy Schmidt", "Grey's Anatomy", "Braindead", "Law & Order:CI", and "30 Rock" (as Weinerslav). As a cabaret artist, Todd has performed at some of the greatest cabaret venues across America, including his most recent one-man show, *All Washed Up*. toddbuonopane.com



JAELLE LAGUERRE (*Charlotte*) is overjoyed to be back at NSMT after performing in their annual *A Christmas Carol*. Favorite credits include *Rock of Ages* (The Engeman Theatre), *Mamma Mia!*, *Buddy Holly* (Argyle Theatre), *Little Shop of Horrors*, *Joseph and the Amazing Technicolor Dream-*

coat, (Rocky Mountain Rep), *Gloria* (Sacramento Theatre Company), and *Rent* (Redhouse). Proud recent grad from Syracuse University (BFA) Thanks to Hells Kitchen Agency for their constant support! Thanks to her favorite team Matthew, Kevin and Milton. Love to her family and God. Jaellelaguerre.com @Jaellelaguerre



KEVIN B. McGLYNN (*Sebastian*) is delighted to be back at North Shore for his 9th production: *Alice in Wonderland*, *How To Succeed...*, *Annie*, *9 to 5*, *Sound of Music*, *Mame*, *Hairspray* and *Oklahoma!* Film: *Annabelle Hooper* and *The Ghosts of Nantucket*, *JACK TV: TYCOON*, *Pandora's Box*, *Dark Places* and *The Murder Castle*.

WHO'S WHO

National Tours: *Kiss Me Kate*, *All Shook Up* and *Forbidden Broadway*. Regional: *Les Miserables*, *Jesus Christ Superstar*, *The Miracle Worker* and *Something Rotten*. Kevin was last seen at Paper Mill Playhouse as George Jessel in *Chasing Rainbows* a new musical chronicling a young Judy Garland's journey to her iconic role of Dorothy in *The Wizard of Oz*. Thanks to family and friends for their love and support. and my Guardian Angels Mom and Dad



DWAYNE P. MITCHELL (*Lord Pinkleton*) is honored to debut with NSMT. He holds degrees from the HBCU Fisk University, where he was featured on the Grammy® award winning album "Celebrating Fisk", and from The Boston Conservatory at Berklee (MFA Musical Theatre). Dwayne has

performed nationally and internationally, most recently as a featured singer with Royal Caribbean Cruise Lines. Favorite previous credits include *Choir Boy* (SpeakEasy Stage) and *Fences* (Umbrella Stage). Dwayne hopes artistry will reach

and help bridge opportunity gaps for black artists and artists of color. Glory to God! @dwaynepmitchell | dwaynepmitchell.com



MYCHAL PHILLIPS (*Gabrielle, u/s Madame*) is thrilled to be making her NSMT debut and sharing the stage with her sister, Gracie. Favorite credits include Erma in *Anything Goes* (National Tour, Ogunquit Playhouse, Gateway Playhouse, Westchester Broadway Theatre), Paulette in *Legally*

Blonde (International Tour), Lina Lamont in *Singin' in the Rain* (Theatre By the Sea), Deb in *Elf* (Gateway Playhouse), Rhoda in *White Christmas* (Ogunquit Playhouse), and Meg in *Brigadoon* (The Wick Theatre). Thanks and love to her fabulous agents at The Collective, to Danny G for the pandemic pep talk, and to the wonderful NSMT team, especially Kevin & Matthew, for putting up with her antics and being fantastic to work with. Love and thanks to Mario and her family for being so unfailingly supportive. MychalPhillips.com

Why shop at one of those "box stores" when you can get the best quality, selection and prices with the personalized service you deserve? We are family owned and operated and it's been that way for over 60 years!

**Largest
Selection of
Brand Name
Appliances**

**0%
FINANCING
AVAILABLE**
See store for details.

**HUGE SAVINGS
IN OUR
SALEM STORE**

- Clearance Annex, on all**
- Scratch & Dents,
 - One-of-a-kinds,
 - Closeouts,
 - Floor Models and
 - Overstock Appliances.



**PLEASE FEEL FREE TO SHOP BY APPOINTMENT
CALL OR TEXT AT EITHER OF OUR LOCATIONS!!!**

95 Turnpike Rd./Rte. 1
Ipswich, MA
978-412-0033

262 Highland Ave.
Salem, MA
978-744-6100

SHOP ONLINE: www.tri-city-sales.com
All Major Credit Cards Accepted. In Store Financing Available.

**CURRENT
STORE
HOURS:**
Monday –
Saturday
9:00am – 6:00pm
Sunday
11:00am – 5:00pm

THANK YOU
for shopping
LOCAL

Shopping local helps to build stronger communities, benefiting neighbors in a network of economic and social relationships, and contributing to local interests.



WHO'S WHO



TREGONEY SHEPHERD (*Marie*) Broadway/National Tours: *Les Miserables* (Madame Thenardier), *Phantom of the Opera* (Wardrobe Mistress/Confidante). National Tours: *Wicked* (Midwife u/s Madame Morrible), *Mary Poppins* (Mrs. Brill). Regional Credits Include: *Sweeney Todd* (Mrs. Lovett), *Lend Me A Tenor* (Julia), *Shirley Valentine* (Shirley Valentine), *Something's Afoot* (Miss Tweed), *The Threepenny Opera* (Mrs. Peachum), *The Music Man* (Eulaylee Shinn), *Blithe Spirit* (Madame Arcati), *A Little Night Music* (Madame Armfeldt), *The Unsinkable Molly Brown* (Mrs. McGlone), *The Secret Garden* (Mrs. Medlock), *Into the Woods* (Witch) and *Steel Magnolias* (Clairee Belcher). Tregoney has her Doctorate in Vocal Performance from ASU.



JAMIE ASKEY (*Fox, Ensemble*) is excited to return to the NSMT stage! She is an NYC based performer. Her favorite credits include *Mamma Mia!* at North Shore Music Theatre and Theatre by the Sea, HBO's "The Gilded Age," Holland America Line, Hershey Park, ME Dance Company, and Dancing with the Stars at Sea. Instagram: @jamiemaskey and www.jamiemaskey.com



MAGGIE BERGMAN (*Ensemble, s/c Marie*) - she/her - is thrilled to throw on a ball gown and make her NSMT debut! Cassie in the current international tour of *A Chorus Line* (Baayork Lee). Regional: *A Chorus Line* (City Springs Theatre, Judy at Interlakes Theatre), *Newsies* (The Gateway), *Singin' in the Rain*, *Saturday Night Fever* (TBTS). Proud Boston Conservatory alum, LINK '21. Endless gratitude to this fabulous cast, The Collective, Kevin, Matthew, Ricky, and my incredible support system. @maggie.bergman



ZELDA CARMEN (*Ensemble, s/c Charlotte*) is thrilled to be a part of NSMT's *Cinderella!* Favorite/Recent credits include *Lizzie the Musical* (Lizzie & Alice u/s), *Xanadu* (Erato), & *Blues For Mister Charlie* (Ensemble). When not performing Zelda enjoys creating dances in their kitchen, writing silly strange short films, and exploring everything their new home, NYC, has to offer. "Much love to my village, I truly would not be here without you all!!!" IG: @GetWazzy



BRIANA FALLON (*Raccoon, Ensemble, Co-Assistant Director /Choreographer, Co-Dance Captain*) is over the moon to be back dancing on her favorite stage with this beloved classic! Other NSMT credits: *Mamma Mia!* ('18, '21), *Freaky Friday*, *Mary Poppins*, *Beauty and the Beast*, *A Christmas Carol*, *Singin' in the Rain*, *Young Frankenstein*, *Saturday Night Fever*, *Billy Elliot*. NYC credits: *Anything Goes*, *Funny Face*. BFA in Musical Theatre from The Boston Conservatory. Owner of Refine Dance Studio in Danvers, MA. A huge thank you to Kevin for, once again, making my career "POSSIBLE"! Much love to my biggest supporters, my husband David, Mom, Dad, family, and friends. @briana_fallon



KELLY GLEASON (*Ensemble*) is thrilled to be back at NSMT! National Tour: *Chicago* (Hunyak u/s Roxie), *42nd Street*. Favorite regional: *Holiday Inn* (Paper Mill Playhouse), *Catch Me If You Can* (The REV), *42nd Street* (North Shore Music Theatre), *Singin' in the Rain* (Girl in Green, Asst. Choreographer; Theatre by the Sea), *Anything Goes* (Westchester Broadway Theatre). Pace U grad. Thanks to Mom, Dad, and the NSMT team!



JOEL KAIMAKANI LIBED (*Ensemble, s/c Topher*) is thrilled to debut at NSMT! Recently Joel was in Ft. Myers, Florida in the Jimmy Buffet Musical, *Escape to Margaritaville!* Joel has traveled to 52 countries with Royal Caribbean and Norwegian Cruise lines as a Mainstage Singer. Off-Broadway/Tours: *Fabulous! The Musical*, *Wizard of Oz international tour*. Select Regional: *Beauty and the Beast*, *Joseph...Technicolor Dreamcoat* (Pharaoh), *Newsies* (Jack Kelly), *Mamma Mia*. Endless love to Steven and Kaia. IG: @joellibedny



TYLLER KENKE (*Ensemble*) is a recent graduate of Boston Conservatory at Berklee BFA Musical Theatre. A few credits include, *Once On This Island* (Speakeasy Stage Company) and *Queens* (Moonbox Productions). During his time at the conservatory he has worked on the following productions: *Good Kids*, *PEMDAS*, *Can't Keep Quiet*, *Shrek*, and *BoCo sings Sondheim*. Special thanks to Jessica Webb, Charles Vincent Burwell, Jean

WHO'S WHO

Pierre Kenke, Judith Minko Kenke, and Bill Cotten.
tyllerkenke.com



RICKY LOFTUS GEORGE (*Ensemble, Co-Assistant Director/ Choreographer, Co-Dance Captain, u/s Sebastian*). Previous credits include WEST END: *Cinderella, Oliver, Merry Wives of Windsor*. UK Tour: *Priscilla Queen of the Desert, Bohemian Rhapsody*.

Royal Caribbean: *Chicago*. Re-

gional Theatre credits include *Oklahoma!* (NSMT) and *Cinderella* at the Paper Mill Playhouse.

Forever grateful to my loving husband and son.

Many thanks to Kevin and Matthew and the whole NSMT team.



BRETT PEDERSON (*Raccoon, Footman, Ensemble*) is so excited to be back at North Shore this summer! He was previously seen here in last year's production of *Mamma Mia!* Other credits include: National Tours - *A Bronx Tale, NOËL the Musical*; Regional - *A Chorus Line* (The Wick Theater), *Beauty and the Beast* (Paper Mill Play-

house), *Newsies* and *Saturday Night Fever* (Theatre by the Sea), *Newsies* (Chanhassen Dinner Theatre). All my appreciation to my family and friends for their endless love and support.

@bspdance



KENNEDY PEREZ (*Ensemble*) is thrilled to be making her North Shore Music Theatre debut after performing in *Mamma Mia!* at Theatre by the Sea last summer. She is currently a swing/understudy in the international production of *A Chorus Line*, directed by Baayork Lee. Much love and gratitude to the cast and crew!



GRACIE PHILLIPS (*Ensemble, u/s Gabrielle*) is thrilled to be back at NSMT—this time with her sister, Mycha! Recent credits include: *Mamma Mia!* (North Shore Music Theatre, Theatre By The Sea), *Head Over Heels* (The Gateway), *A Bronx Tale* (The Engeman), *Joseph, Chicago* (Theatre By The Sea), *The Marvelous Wonderettes* (LTOTS), *Memphis* (North Carolina Theatre), *Legally Blonde* (In-

HOMEOWNERS BESTFRIEND

CRANNEY HOME SERVICES

Plumbing • Heating • Cooling • Electrical • Drain Cleaning

WWW.CRANNEYHOMESERVICES.COM

ONE CALL DOES IT ALL
1-800-CRANNEY



WHO'S WHO

ternational Tour) BFA Musical Theatre, Pace University. All the love and thanks to her parents and fiancé, Jacob. Thank you to Matthew and Kevin! The Hell's Kitchen Agency. Gracieephillips.com, @grelph_



MARIA CRISTINA POSADA SLYE (*Lady of Ridicule, Ensemble, u/s Ella*) is honored to make her North Shore debut! New York Theatre: *Evita* (Mistress, New York City Center, Encore's), *iAmericano!* (Understudy Ceci/Swing, Off-Broadway). National Tours: *Hello, Dolly!*, *The Bodyguard Musical*, *Ghost the Musical*, and *Elf the Musical*. Regional: *West Side Story* (Anita, Virginia Repertory Theatre/Florida Rep Theatre), *Jesus Christ Superstar* (The Muny), *The Bodyguard Musical* (Papermill Playhouse), *Seven Brides...* (Dorcas, Ogunquit Playhouse), *A Chorus Line* (Diana, Engeman Theatre), *In the Heights* (Carla, Hangar Theatre). Honor to God and thanks to the most supportive family imaginable! Proud AEA member. All Black lives matter! iPatria y Vida! Ig: @m_c_posada_slye www.mariacristinaposadaslye.com



JORDAN STANFIELD (*Ensemble*) is so excited to be making his NSMT debut! Jordan was previously in the studio company at Ballet Arizona. He's ready to dance his little heart out and hope you enjoy the show! All the love in the world to family and friends! @jordysaurus_

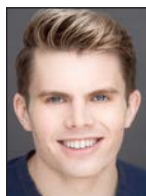


AVILON TRUST TATE (*Ensemble, s/c Lord Pinkleton*). Greensboro, NC. Has trained at his hometown studio (TPCTC) and has attended prestigious dance schools such as Ailey and DTH, (NYC) and more. He now studies Musical Theater at The University of North Carolina C'boro where he recently played the role of Plankton in *SpongeBob the Musical* and Joseph in *One Week at Woolworths*. Endless gratitude to God, my family and friends, and my agency The Collective. IG: @avilon.tate



JOHN ZAMBORSKY (*Fox, Driver, Ensemble, s/c Jean-Michel*) is thrilled to be making their debut at North Shore Music Theatre! Regional: *The Cher Show* (Ogunquit Playhouse); *A Bronx Tale* (John W. Engeman Theater);

Altar Boyz (Forestburgh Playhouse). Elon MT '22. LINK Class 4. Huge thanks to Mikey at The Collective Talent and everyone at NSMT. Sending love to Mom, Dad, Grandma Helen, Grandma Jay, and Teddy. @izamwhoiam



ALEX ZARLENGO (*Ensemble*) is thrilled to be returning to North Shore since performing in *Mary Poppins* in 2016. A dancer originally from Mattapoisett, MA, Alex holds a degree in Neuroscience from Salve Regina University where he graduated with high honors. After college, Alex has gone on to perform in several musicals, music videos, and television shows in New York and Los Angeles. Alex would like to thank Ma, Da, Triona, and Zack for their continued love and support. www.alexzarlengo.com

RICHARD RODGERS + OSCAR HAMMERSTEIN II (*Music, Lyrics & Original Book*). After long and highly distinguished careers with other collaborators, Richard Rodgers (composer, 1902–79) and Oscar Hammerstein II (librettist/lyricist, 1895–1960) joined forces in the early '40s to create the most successful partnership in the American musical theater. *Oklahoma!* (1943), the first Rodgers & Hammerstein musical, was also the first of a new genre, the musical play, blending Rodgers' sophisticated style of musical comedy (which he had perfected in a 25-year partnership with lyricist Lorenz Hart) with Hammerstein's innovations in operetta (conceived in collaboration with such composers as Sigmund Romberg, Vincent Youmans, Rudolf Friml and Jerome Kern). Over the next 16 years, R&H wrote eight more Broadway musicals: *Carousel*, *Allegro*, *South Pacific*, *The King and I*, *Me and Juliet*, *Pipe Dream*, *Flower Drum Song* and *The Sound of Music*. They wrote one movie musical, *State Fair*, subsequently adapted to the stage, and one for television, "Cinderella." First broadcast live with Julie Andrews in 1957, remade with Lesley Ann Warren (1965), and again with Whitney Houston and Brandy (1997), *R&H's Cinderella* made her Broadway debut in 2013.

DOUGLAS CARTER BEANE (*New Book*). Musicals: *The Band Wagon* (Encores), *Cinderella* (Tony nom., Best Book), *Lysistrata Jones* (Tony nom., Best Book), *Sister Act* (Tony nom., Best Book) and *Xanadu* (Tony nom., Best Book; Drama Desk Best Book; Outer Critics Circle Best Musical). Plays: *Shows for Days* (Lincoln Center), *The Nance*, *The Little Dog Laughed* (Tony nom., Olivier nom., GLAAD Media Best Play), *As Bees in Honey Drown* (Outer Critics Circle Award), *Mr. & Mrs.*

WHO'S WHO

Fitch, Music From a Sparkling Planet, The Country Club, Advice From a Caterpillar, The Cartells. Opera: *Die Fledermaus* (Met). Revues: *White Lies, Mondo Drama.* Screenplays: *To Wong Foo, Thanks for Everything! Julie Newmar, Advice From a Caterpillar.* TV: "The Nance" (PBS). Up-coming: *Fairycakes, Robin Hood.* Life: Husband Lewis Flinn, son Cooper, daughter Gabrielle.

KEVIN P. HILL (*Direction & Choreography / Producing Artistic Director*). Born and raised in Wal-
tham, Massachusetts, Kevin began his theatrical
career as dancer and actor. He appeared in Na-
tional Touring companies of *Hello, Dolly!* with
Carol Channing, Leslie Uggams and Michele Lee,
Anything Goes and the International Touring
Company of *A Chorus Line*. New York audiences
have seen him in the Off-Broadway production of
Party. Regional credits as a performer include:
*West Side Story, Good News! A Chorus Line, My
Fair Lady* and Marvin in *Falsettoland*. Kevin has
directed and choreographed over 100 produc-
tions across America. He has had the privilege of
working with such stars as Marin Mazzie, Joanne
Worley, Kathleen Turner, Josh Groban, Jonathan
Groff and Tony Award winner, Cady Huffman. In

New York, he was the assistant to the director of
On the Twentieth Century at the New Amster-
dam Theatre and assistant to the choreographer
on the revival of *Guys and Dolls*. He directed and
choreographed *Mamma Mia!, Sunset Boulevard,
Jersey Boys, A Christmas Carol, Young Franken-
stein, Mary Poppins,* and *Sister Act* here at NSMT
and *Mamma Mia!, Smokey Joe's Cafe, Sister Act,
Young Frankenstein, Mary Poppins,* and *Grease*
at Bill Hanney's Theatre By The Sea in Rhode Is-
land, where he is also Producing Artistic Director.
Kevin has been nominated as Best Director/Chore-
ographer for his work on *Smokey Joe's Cafe,
Rent, The Full Monty, Chicago,* and *Edwin Drood,*
and was awarded the NH Theatre Award for Best
Choreography for *West Side Story* at the Paper-
mill Theatre. Kevin has also been awarded Six
Broadway World awards and two Motif awards for
his productions of *Mamma Mia!, Mary Poppins*
and *Young Frankenstein*. Future projects include
an original danced play called *Standing Still*. As a
Professor of Dance, Kevin has been on faculty at
Pennsylvania State University, Kansas State Univer-
sity and most recently The Boston Conservatory of
Music. Kevin is a proud member of SDC, AEA and
Dance Masters of New England, Chapter 5.

MHD&S

MACLEAN HOLLOWAY
DOHERTY AND SHEEHAN

978-774-7123



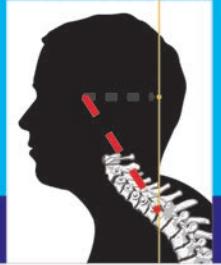
8 ESSEX CENTER DRIVE

PEABODY

978-774-7123

ARE YOU SHIFTED?

Chronic health
issues can
sometimes
be related to
a structural
abnormality
with the spine



COLLATERAL DAMAGE

- Tension Headaches
- Muscle Pain
- Immobility
- Dizziness
- Low Energy
- Poor Sleep
- Shoulder Pain
- Joint Pain
- Digestive Dysfunction
- Degenerative Disc Disease
- Degenerative Joint Disease
- Migraine Headaches
- Muscle Tension

Visit beverlychiropractic.com for your
FREE Posture Self-Assessment Tool

Beverly Family Chiropractic 978-927-5880
72 Sohler Rd.
Beverly, MA

WHO'S WHO

MILTON GRANGER (*Music Director*) returns to North Shore Music Theatre having previously music directed *Smokey Joe's Cafe*, *A Christmas Carol* ('14 - '18, '21), *Sunset Boulevard*, *Jersey Boys*, *Hairspray*, *Jekyll & Hyde*, *Mame*, *42nd Street*, *Young Frankenstein*, *The Music Man*, *West Side Story*, *Singin' in the Rain*, *Mary Poppins*, *Saturday Night Fever*, *Anything Goes*, *Cats* and *Swing!*. As pianist/conductor: Broadway: *Mary Poppins*, *The Woman in White*, *Chitty Chitty Bang Bang*, *Cyrano the musical*, and *Camelot* (with Robert Goulet). National Tours: *Phantom of the Opera*, *Big*, *Sunset Boulevard*, *Camelot*. International: *West Side Story*. Over 100 regional productions at North Shore Music Theatre, Baltimore Center-Stage, Westchester Broadway Theatre and others. Work as composer/lyricist: Two First Prizes in National Opera Association new chamber opera competition; nine chamber operas, performed regularly throughout U.S. and Canada. Several produced musical plays, including *Castle Walk* (NYMF Next Link Selection), and *Peter Rabbit and the Garden of Doom* (winner, Actors' Playhouse competition). miltongranger.com

KYLE DIXON (*Scenic Design*). Kyle's scenic artwork may be seen across the United States, from NYC to Las Vegas. Recent scenic designs include: *Smokey Joe's Cafe*, *Mamma Mia!* ('18, '21), *The Bodyguard*, *Sunset Boulevard*, *Jersey Boys*, *Freaky Friday*, *Oklahoma!*, *Hairspray!* *Peter Pan*, *Mame*, *42nd Street*, *Young Frankenstein*, *The Music Man*, *West Side Story* (North Shore Music Theatre), *White Christmas*, *Rock of Ages*, and *A Bronx Tale* (John W. Engeman Theatre), *Camelot* (Westchester Broadway Theatre), *The Broadway Classic Music Dance Review* (Tianqiao Performing Arts Center, Beijing, China), *Footloose*, *Million Dollar Quartet*, *Saturday Night Fever*, *Newsies*, *Singin' in the Rain*, *Love and Other Fables*, *Chicago*, *Joseph and the Amazing Technicolor Dreamcoat*, *Mamma Mia!* (BroadwayWorld Regional Award), *Ain't Misbehavin'*, *The Producers*, *Disney's Beauty and the Beast*, *The Music Man*, *Beehive*, *Buddy*, *West Side Story*, *The Wizard of Oz*, *Sister Act*, and *Young Frankenstein* (Theatre By The Sea, BroadwayWorld Regional Award), *Growing up 70's starring Barry Williams* (Off Broadway), *Angelina Ballerina*, *The Musical* (NYC, Toronto, National Tour), *Fancy Nancy*, *The Musical* (NYC, National Tour), *StinkyKids* (Off Broadway Alliance Award), *It Shoulda Been You* (starring Kim Zimmer) and *The Wizard of Oz* (Gretna Theatre, BroadwayWorld Regional Award), *Xanadu*, *Doubt*, *The Secret Garden* and *The Merchant of Venice* (Williams Center for the Arts), and many more. Kyle has designed concert events for Faith Prince, Tommy Tune, Pam Tillis, and the NC Gubernatorial Inauguration Gala (Telly Award). In ad-

dition to theatre, Kyle accepts fine art commissions and is the designer of North Carolina's historic Elizabethan Gardens' *Winter Lights*. KyleDixonDesigns.com Instagram: [@kyle_dixon_designs](https://www.instagram.com/kyle_dixon_designs)

COREY WHITTEMORE (*Lighting Design*) is excited to be designing his first show with North Shore Music Theatre. Nine years ago Corey was a spot light operator at this theatre and is thrilled to be back as a designer. He has designed shows with Columbia University, Salem Theatre Company, New York University, and Greater Boston Stage Company. He is also frequently an Associate Lighting Designer at Ogunquit Playhouse. Corey received his MFA at New York University and his BFA at Salem State University. Thank you to Sheila, Thom, and the rest of production for their hard work. cmwhittemore.com.

DON HANNA (*Sound Design*) is happy to be returning to NSMT for *Cinderella*. Don is a freelance sound designer and engineer whose work can be seen (well, heard) in national tours, regional theaters, and concert productions alike. Touring Highlights: *An American In Paris* (Sound Design, Big League Productions), *The Wizard of Oz National/International Tour* (Sound Design, Apex Touring) *Pippin* National Tour (Associate Sound Design/Head Audio, Apex Touring), *Fame The Musical* (Sound Design). Regional Highlights: Regional Premier of *Rock of Ages* (Sound Design, Gateway Playhouse), the world premiere of *Heartbreak Hotel* (Sound Design, Ogunquit Playhouse), *Mel Brook's Young Frankenstein* (Sound Design, North Shore Music Theatre, Gateway Playhouse, Ogunquit Playhouse), *In the Heights* (Sound Design, John W Engeman Theatre), among many more. A special thank you to my friends, family and Bethany for their continual love and support.

KELLY BAKER (*Costume Coordinator*) is so happy to back for another season! Previous NSMT Costume Design/Coordinator credits include: *Smokey Joe's Cafe*, *Mamma Mia!* ('21, '18), *The Bodyguard*, *Sunset Boulevard*, *Jersey Boys*, *Freaky Friday*, *Oklahoma!*, *A Christmas Carol*, *Hairspray*, *Jekyll & Hyde*, *Peter Pan*, as well as TYA shows *A Year With Frog and Toad* and *Curious George and the Golden Meatball*. Other companies she has worked for include: The Boston Conservatory at Berklee, New England Conservatory, Greater Boston Stage Company, Odyssey Opera, The Cape Playhouse, Commonwealth Shakespeare Company, Theatre By The Sea, and OIV's Ouroboros Trilogy. Thank you to Kevin, Karen, Matthew and the amazing NSMT Wardrobe Crew for all that they do! Hi Mama!

WHO'S WHO

RACHEL PADULA-SHUFELT (*Wig Design*) Broadway credits include: *Glass Menagerie*, *Waitress*. Regional: *Macbeth in Stride*, *Moby Dick* Elliot Norton Award winner- Best Design), *Black Clown*, *Waitress*, *Fingersmith* (Elliot Norton Award winner- Best Design), *Natasha, Pierre and the Great Comet of 1812* (Elliot Norton award winner- Best Design), *Marie Antoinette*, and *Crossing* with American Repertory Theatre. *The Colored Museum* at Huntington Theatre Company. Rachel is the hair and makeup supervisor for Boston Ballet.

STEPHEN MacDONALD (*Production Stage Manager*) is excited to be working on another production with North Shore Music Theatre after stage managing *Smokey Joe's Cafe*, *A Christmas Carol* ('21) and *Mamma Mia!* ('21). Other recent credits include *The Inheritance*, *People, Places and Things* and *Admissions* with Speakeasy Stage Company of Boston, *Mamma Mia!* ('21) at Theatre by The Sea, and *A Year with Frog and Toad* TYA at North Shore Music Theatre. When not working professionally as a stage manager, Stephen spends his time directing and designing educational productions, teaching future generations of performing and technical theatre artists.

DAKOTAH WILEY HORAN (*Assistant Stage Manager*) is thrilled to be back having worked as the Assistant Stage Manager on *Smokey Joe's Cafe*, *A Christmas Carol* '16 - '19, '21, *Mamma Mia!* ('18, '21), *The Bodyguard*, *Sunset Boulevard*, *Jersey Boys*, *Freaky Friday*, *Oklahoma!*, *Hairspray*, *Jekyll & Hyde*, *Peter Pan*, *Mame*, *42nd Street*, *Evita*, *Young Frankenstein*, *Disney's Beauty and the Beast*, *The Music Man*, *West Side Story*, *Spamalot* and *Singin' In The Rain*, and as the Production Assistant for *Mary Poppins* and *Funny Girl*. Some of her previous Stage Management credits include: Capital Repertory Theatre: *Betrayal*, *Marvelous Wonderettes*, *Cactus Flower*, *33 Variations*, *Leslie Uggams in Uptown Downtown*, *Man of La Mancha*, and *Single Girls Guide*. Pendragon Theatre: *Clean House*, and *Twelve Angry Men*. She would like to thank her parents for instilling and encouraging her love of theatre, and to her friends and her North Shore family for always supporting her.

ROBERT L. RUCINSKI (*Assistant Music Director/Rehearsal Pianist*) is thrilled to be a part of the 2022 season at NSMT. Past NSMT Music Director credits include *A Christmas Carol* ('19), *A Year with Frog & Toad*, *School House Rock Live Jr.* Past Assistant Music Director credits include *Smokey Joe's Cafe*, *A Christmas Carol* ('04 - '07, '10 - '18, '21), *Sunset Boulevard*, *Jersey Boys*, *Freaky Friday*, *Oklahoma!*, *Hairspray*, *Jekyll &*

Hyde, *Peter Pan*, *42nd Street*, *West Side Story*, *Singin' in the Rain* ('06 & '16), *Les Misérables*, *The Little Mermaid*, *The King and I*, *Forever Plaid*, *Seven Brides for Seven Brothers*, *Crazy for You*, *Cinderella* ('05-'06), *Ain't Misbehavin'*, *Damn Yankees*, *Camelot*, *Fame*. Robert has been music director at many theaters throughout New England and teaches at several high school and university theater programs in the local area. A native of Jersey City, NJ, he now lives in Arlington, MA. More info at RucinskiMusic.com.

BILL HANNEY (*Owner/Producer*) is honored and proud to have been responsible for both the 2007 purchase and re-opening of Theatre By The Sea (theatrebythesea.com), the landmark 500 seat professional summer theatre and restaurant in Wakefield, RI and the 2010 purchase and re-opening of North Shore Music Theatre (nsmt.org), the 1,500 seat nationally renowned regional theatre in Beverly, MA. He began his career in show business at age 19, leasing and developing movie theaters, including his first multiplex in Quincy, Massachusetts. Before long, he was booking rock shows (Jefferson Starship, Rush) and other types of live entertainment, which eventually led to the presenting and producing of Broadway productions. One such show was an appearance by the legendary mime artist, Marcel Marceau. As president of Broadway Productions, Bill presented national tours such as *Annie*, *Amadeus*, *Dancin'*, *Peter Pan*, *The Rocky Horror Show* and *Mark Twain* starring Hal Holbrook, throughout New England including Worcester, Springfield, Portland, Maine and Boston. Throughout his career, Bill has stayed focused on his movie theatre chain having bought, built, owned, operated and sold more than 30 cinemas. His company, Entertainment Cinemas, currently operates seven movie complexes in four states. In 2009, Bill was elected President of the Theatre Owners of New England. Bill's ongoing work with NSMT inspires him to consider acquiring additional performance venues at which he plans to someday share his productions between his theatres. Bill has been named to the North Shore Top 100 by the North Shore Chamber of Commerce. In 2012, he was recognized by both the Beverly Chamber of Commerce and Salem Chamber of Commerce as Business Person of the Year. He is the recipient of the 2015 Leslie S. Ray Hall of Fame Award, presented by the Greater Beverly Chamber of Commerce. Bill is a member of the League of Broadway Producers and was involved with the recent revival of *Pippin*, as well as developing several new musicals. Bill also produces Cape Live!, a summer entertainment series at the Barnstable Performing Arts Center in Hyannis.

WHO'S WHO

MATTHEW CHAPPELL (*Casting Director*) is honored to continue working with this remarkable creative team as resident Casting Director and Associate Producer for Bill Hanney's North Shore Music Theatre and resident Casting Director for Theatre By The Sea. An accomplished performer, he is fortunate to have worked all over the world in more than 30 productions, including several shows at NSMT, as lead vocalist in *Stephen Schwartz's Magic To Do* for Princess Cruise Lines, and appearances at Feinstein's/54 Below, The Duplex, Carnegie Hall, and The Metropolitan Room. For many years, Matthew worked as a talent agent, casting associate, and photographer for Heyman Talent Agency, specializing in TV/film, commercials, runway, print and voiceovers. He is a former Associate Producer for Encore International, casting and producing shows for theme parks, cruise ships, and corporate events.

ACTORS' EQUITY ASSOCIATION (AEA), founded in 1913, represents more than 45,000 actors and stage managers in the United States. Equity seeks to advance, promote and foster the art of live theatre as an essential component of our so-

ciety. Equity negotiates wages and working conditions, providing a wide range of benefits, including health and pension plans. AEA is a member of the AFL-CIO, and is affiliated with FIA, an international organization of performing arts unions. The Equity emblem is our mark of excellence. www.actorsequity.org

NORTH SHORE MUSIC THEATRE (NSMT) Since 1955, NSMT has become one of the most attended theatres in New England, with approximately 250,000 patrons annually. With a national and regional reputation for artistic achievement, NSMT has received numerous industry awards including Elliot Norton Awards, IRNE Awards, the Rosetta Le Noire Award from Actors' Equity, and the Moss Hart Award. NSMT produced the World Premiere of *Memphis* in 2003, the show went on to win four 2010 Tony Awards including Best Musical. Under the new ownership of Bill Hanney in 2010, NSMT continues to annually produce a musical subscription series and an annual production of *A Christmas Carol* along with celebrity concerts, children's programming, and year-round education programs for all ages.

**TRAFFIC and WEATHER
Together on the 3s**

**Breaking News
When it Happens**

**WBZ NEWSRADIO 1030
NEW ENGLAND'S
TRUSTED SOURCE
FOR NEWS AND
INFORMATION**

**WBZ 1030
NEWS RADIO**

IHEART.COM

NORTH SHORE MUSIC THEATRE STAFF

Owner/Producer - Bill Hanney
Producing Artistic Director - Kevin P. Hill
General Manager - Karen Nascembini
Chief Financial Officer - Tom Senter
Director of Marketing
and Communications - Mike Ceceri
Director of Education - Kyla Moulton
Finance Manager - Diane Ford
Finance Associate - Kathy Carnevale
Director of Corporate and
Community Relations - Kirk P. Mansfield
Administration Intern - Michael Galvin
Production Photography - Paul Lyden
Videographer - Award Productions
Accounting Firm - CompCo Associates
Legal Counsel - Tom Alexander, Alexander & Femino
COVID Compliance Officers - Matthew Chappell, Amanda
Ostrow-Mason, Mariah Ruben

PATRON SERVICES & CONCESSIONS

Director of Patron Services - Suzanne Kendall
Box Office Customer Service Reps - Tom Amos, Rosanne
Coble, Carol Dempsey, Donna Full, Lorrie Goudreau,
Nancy Jewell, Jaclyn Rosenberg, Jean Souza
Bar/Concession Staff - Matt Barbrick, Jim Coble, Irene
Cote, Erin Gardner, Sophia Gallo, Paula Guptill, Michael
Galvin, Chris Kendall, Darla Loundsbury, Mike Mitchell,
Susanne Nangle, Katy Place, Marielle Sabbag
House Manager - Jackie Rapisardi
Ushers - Jill Benas, Ann Berman, Brenda Berry, Susan
Capodilupo, Dianne Carter, Jane Cohen, Paul Cohen,
Anna Craig, Jean Dawson, Nancy Jo Delaney, Tom Dela-
ney, Lori DeNisco, Joan Dolan, Marisa Englin, James
Ferguson, John Filip, Gregory Gibson, Diane Gordon,
Ruth Greco, Betsy Holbrook, Mary Jarmolowicz, Dorrie
Kimkaran, Gladie Kneeland, Walt Kosmowski, Susan
Kuppens, Katie Linares, Cindy Maguire, Louise McKenna,
Ginny Mocerri, Beverly Nathan, Gloria Nicastro, Linda
O'Keefe, Mary O'Shea, Helen Papele, Dottie Pinkham,
Paula Pobiedzinski, Susan Rizzo, Susan Rogers, Robert
Sant Fournier, Jayne Theodore

FACILITIES

Director of Facilities - Heather Romani
Facilities Managers - Rick Dunn
Facilities Crew - Chanel Call, Chris Moudarri, Glen
Getchell, Mike Symonds
Parking Attendants - Gavin Bioghosian, Jenna Boghosian,
Dylan Crowley, Beatriz DaCosta, Daniel Fiore, Kay
Fortado, Morgan Gold, Jerome Guillebbe, Daniel Grant,
Ashton Harville-Fry, Kara Hersey, Patrick Johnson, Bob
Laws, Luke Manzo, Kirsten McMahon, Candy Melanson,
Michael Mitchell, Evan Moscariello, Ryan Munzing, Erin
Perry, Mackenzie Quarterone, Riley Riordan, Gabriel
Rogers, Joshua Sidmore, Dakota Sprankle, Makayla
Sprankle, Joesph St. Pierre, Kaitlyn Wilson

PRODUCTION ADMINISTRATION

Associate Producer/Casting Director - Matthew Chappell
Interim Production Manager - Stephen MacDonald*
Associate Production Manager - Scott G. Nason
Company Manager – Amanda Ostrow-Mason
Assistant Company Manager - Mariah Ruben
Musician Contractor - Jay Daly

SCENE SHOP

Technical Director - Mark Vagenas
Assistant Technical Director - Mike Gove
Carpentry Lead - Myles McMann
Assistant Carpentry Lead - David Adriance
Carpenters - Abbey Kulhavy, Chris Parsons, Derek Hodge,
Connor Thompson, Jack DeLorenzo
Stagehands - Ben Florance (Mechanics Operator), Andrew
Duggins (Props Run), Abby Ray, Bowie Biosvert, Maggie
Martin, Thomas Tropeano, Melissa Poirier, Josie Feltus,
David Visini
Spotlight Operators - Melanie Raimo, Jake McStay,
Rebecca Gosiewski, Johanna Chesshir

PAINT SHOP

Paint Charge - Sasha Seaman
Assistant Paint Charge - Shannon "Soks" Gemma

PROP SHOP

Props Lead - Adam Nicol
Assistant Props Lead- Chris Klepadlo
Props Artisan - Andrew Duggins, Bowie Biosvert, Melissa
Martin

ELECTRICS

Lighting Lead - Sheila Donovan
Assistant Lighting Lead - Tom Brabant
Electricians - Brendan Marr, Violet Gayzagian, Josie Feltus

SOUND

Audio Engineer - Adam Bates
Mic Tech - Nick White

COSTUMES

Costume Shop Manager - Kelly Baker
Wardrobe Supervisor - Kat Shanahan
Assistant Costume Shop Manager - Joellen Olari
Lead Dresser - Joey Pisano
Wig Maintenance - Dan Galyon
Stitchers/Dressers - Hannah Cousins, Kiara Escalera, Dan
Galyon, Rebecca Glick, Rebecca Gosiewski, Sarah
Scougall

STAGE MANAGEMENT

Production Stage Manager - Stephen MacDonald*
Assistant Stage Manager - Dakotah Wiley Horan*
Production Assistant - Abby Ray
Stage Operations - Derek Hodge

**Members of Actors' Equity Association*

2022 CORPORATE CIRCLE

NSMT thanks the following organizations for their leadership through corporate support.

2022 SHOW SPONSORS



SMOKEY JOE'S CAFE



Recovering hearts. Saving lives.

CINDERELLA



BEVERLY • NORTH ANDOVER • METHUEN • SWAMPSCOTT

A CHRISTMAS CAROL 2022

PRODUCER



Broadway Club Sponsor



MARCEAN WELLS/DOHERTY AND SHEEHAN

DIRECTOR



CHOREOGRAPHER



CONDUCTOR



Education Dept Underwriter



OUT AT THE NORTH SHORE



Premier Sponsor



Your Four Season Getaway



BEVERLY ATHLETIC CLUB

Official Gym



ACTOR WELCOME BAG



HOTEL PARTNER



SPECIAL THANK YOU TO OUR PREFERRED VENDORS



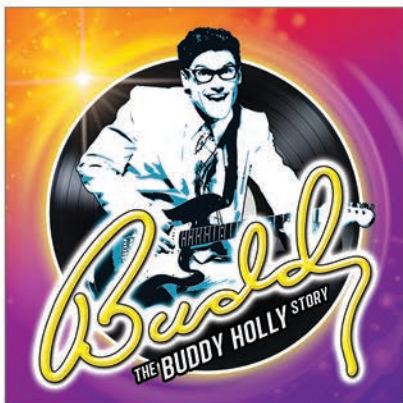
To find out more about North Shore Music Theatre corporate memberships, please contact:
Kirk P. Mansfield, Director of Corporate & Community Relations | 978.232.7200 x7277 | kmansfield@nsmt.org

SCAN THIS QR CODE TO VIEW & DOWNLOAD THE FULL PROGRAM FOR THIS SHOW

1. Open the Camera or QR Code reader on your phone.
2. Hold your device over a QR Code so that it's clearly visible within your smartphone's screen. Two things can happen when you correctly hold your smartphone over a QR Code. The phone automatically scans the code.
3. If necessary, press the button. Presto!



FULL PROGRAM ALSO AVAILABLE ONLINE: WWW.NSMT.ORG/CINDERELLA



AUGUST 16 - AUGUST 28



SEPTEMBER 20 - OCTOBER 3



OCTOBER 25 - NOVEMBER 6



DECEMBER 1 - DECEMBER 23



THURSDAY & FRIDAY
JULY 28 • 10AM | 29 • 10AM & 1PM



TUESDAY
AUGUST 23 • 10AM & 1PM



SATURDAY
OCTOBER 8 • 7PM AUCTION 8PM SHOW



SUNDAY
OCTOBER 9 • 2PM