

BILL HANNEY'S
NORTH SHORE
MUSIC THE TRE

Smobey

JOE'S

CAFE

The Songs of
LEIBER AND STOLLER

JUNE 7 - JUNE 19, 2022





Are you still on track for retirement?

Investors have survived market swings and corrections before. But a twinge of uncertainty may have you wondering if you should get another opinion to help confirm your wealth is in the right place. That's why we've made it as easy as we can to have a complimentary, face-to-face meeting with a Financial Advisor.

Maybe you just want to know if you're really on track for retirement or if your investments could be better aligned to your goals. Or in the process of working hard for your money, you worry you've overlooked some necessary steps to transfer your wealth.

Whatever's on your mind, we're here to listen, and we'll help you evaluate your plan. It's free, and there's no obligation. Then you can decide if your wealth is getting the care it deserves.

Lee Wealth Management
Group of Wells Fargo Advisors



Gregory J. Lee

Managing Director - Investment Officer

NMLS # 258142

978-524-1642 direct

978-524-4105 fax

800-272-7300 toll-free

138 Conant St, 4th Floor

Beverly, MA 01915

Gregory.lee@wfa.com

<https://fa.wellsfargoadvisors.com/lee-wealth-management-group>

<https://www.linkedin.com/in/gregleewellsfargo>

Investment and Insurance Products:

► NOT FDIC Insured ► NO Bank Guarantee ► MAY Lose Value

BILL HANNEY
Owner and Producer

BILL HANNEY'S
NORTH SHORE
MUSIC THE TRE

KEVIN P. HILL
Producing Artistic Director

Presents

Smokey JOE'S
The Songs of **LEIBER AND STOLLER**

Words & Music By

JERRY LEIBER AND MIKE STOLLER

With

ANDRÉS ACOSTA **KORIE LEE BLOSSEY** **CHRISTOPHER BRASFIELD**
KELSEY DENAE **DOMONIQUE FOSTER** **NICOLE HENRY**
DAVID HUGHEY **TYLLER KENKE** **KATIE LADUCA** **NATHAN LUCREZIO**
MARIAH LYTTLE **DWAYNE P. MITCHELL** **BAILEY PURVIS**

Scenic Design
KYLE DIXON

Costume Design
KELLY BAKER

Lighting Design
JACK MEHLER

Sound Design
DON HANNA

Hair & Wig Design
RACHEL PADULA-SHUFELT

Assistant to the Director
TOMMY SCRIVENS

Associate Choreographer
ALBERT GUERZON

Production Stage Manager
STEPHEN MACDONALD

Associate Producer and Casting Director
MATTHEW CHAPPELL

General Manager
KAREN NASCEMBENI

Music Direction
MILTON GRANGER

Additional Staging
KEVIN P. HILL

Direction and Choreography
STEPHANIE POPE LOFGREN

JUNE 7 - JUNE 19, 2022

Originally produced on Broadway by Richard Frankel, Thomas Viertel, Steven Baruch, Jujamcyn Theatres/ Jack Viertel, Rick Steiner, Frederic H. Mayerson and Center Theatre Group/ Ahmanson Theatre/ Gordon Davidson.

SMOKEY JOE'S CAFE - THE SONGS OF LEIBER AND STOLLER is sponsored by **IRON TREE SERVICE**

SMOKEY JOE'S CAFE - THE SONGS OF LEIBER AND STOLLER is presented through special arrangement with Concord Theatricals.
www.concordtheatricals.com



PLEASE TURN OFF ALL PHONES & ELECTRONIC DEVICES



THE USE OF ANY RECORDING DEVICE, EITHER AUDIO OR VIDEO, AND THE TAKING OF PHOTOGRAPHS, EITHER WITH OR WITHOUT FLASH, IS STRICTLY PROHIBITED.



*Start to Finish...
It's All About your Experience!®*



Iron Tree®
S E R V I C E

855-IRON-TREE
IronTreeService.com

Proud Sponsor

Smockey **JOE'S** [♪]
CAFE

BILL HANNEY'S
NORTH SHORE
MUSIC THEATRE



THE COMPANY

(in alphabetical order)

Michael	ANDRÉS ACOSTA*
Fred	KORIE LEE BLOSSEY*
Victor	CHRISTOPHER BRASFIELD*
Pattie	KELSEY DENAE*
Michael (June 7 - 12)	ALBERT GUERZON*
Brenda	NICOLE HENRY*
Adrian	DAVID HUGHEY*
Ken	NATHAN LUCREZIO*
BJ	MARIAH LYTTLE*
DeLee	BAILEY PURVIS*

PERFORMANCE SWINGS

Swings never substituted for listed performers unless a specific announcement is made at the time of the performance.

DOMONIQUE FOSTER*, TYLLER KENKE*, KATIE LADUCA*, DWAYNE P. MITCHELL*

Production Stage Manager - **STEPHEN MACDONALD***

Assistant Stage Manager - **DAKOTAH WILEY HORAN***

Assistant Musical Director/Rehearsal Pianist - **ROBERT L. RUCINSKI**

Co-Dance Captains - **KATIE LADUCA*, NATHAN LUCREZIO***

* Member of Actors' Equity Association, the Union of Professional Actors and Stage Managers in the United States.

Special thanks to Ricola natural herb cough drops, the official cough drop of North Shore Music Theatre

Why shop at one of those "box stores" when you can get the best quality, selection and prices with the personalized service you deserve? We are family owned and operated and it's been that way for over 60 years!

**Largest
Selection of
Brand Name
Appliances**

**0%
FINANCING
AVAILABLE**
See store for details.

**HUGE SAVINGS
IN OUR
SALEM STORE**

Clearance Annex, on all

- **Scratch & Dents,**
- **One-of-a-kinds,**
- **Closeouts,**
- **Floor Models and**
- **Overstock Appliances.**



**PLEASE FEEL FREE TO SHOP BY APPOINTMENT
CALL OR TEXT AT EITHER OF OUR LOCATIONS!!!**

**95 Turnpike Rd./Rte. 1
Ipswich, MA
978-412-0033**

**262 Highland Ave.
Salem, MA
978-744-6100**

SHOP ONLINE: www.tri-city-sales.com

All Major Credit Cards Accepted. In Store Financing Available.

CURRENT

STORE

HOURS:

Monday -

Saturday

9:00am - 6:00pm

Sunday

11:00am - 5:00pm

THANK YOU
for shopping
LOCAL

Shopping local helps to build stronger communities, benefiting neighbors in a network of economic and social relationships, and contributing to local interests.





**CUSTOM
MADE**
AT YOUR
CONVENIENCE

IN-STORE OR
BY APPOINTMENT
AT YOUR HOME
OR OFFICE

BRIONI | CANALI | ISAIA | OXFORD
HICKEY FREEMAN | COPPLEY | ETON

G | **GIBLEES**
MENSWEAR

85 ANDOVER STREET
RT. 114, DANVERS
978.774.4080
giblees.com



COME IN ONCE, YOU'LL BE A CUSTOMER FOR LIFE!

MUSICAL NUMBERS

There will be one 20 minute intermission.

ACT I

"Neighborhood"
"Young Blood"
"Falling"
"Ruby Baby"
"Dance With Me"
"Neighborhood" (Reprise)
"Keep on Rollin'"
"Searchin'"
"Kansas City"
"Trouble"
"Love Me/Don't"
"Fools Fall in Love"
"Poison Ivy"
"Don Juan"
"I Keep Forgettin'"
"On Broadway"
"D.W. Washburn"
"Saved"

ACT II

"Baby, That is Rock & Roll"
"Yakety Yak"
"Charlie Brown"
"Smokey Joe's Cafe"
"Pearl's A Singer"
"Teach Me How To Shimmy"
"You're The Boss"
"Loving You"
"Treat Me Nice"
"Hound Dog"
"Little Egypt"
"I'm A Woman"
"There Goes My Baby"
"Love Potion #9"
"Some Cats Know"
"Jailhouse Rock"
"Fools Fall in Love" (Reprise)
"Spanish Harlem*"
"I (Who Have Nothing)"
"Neighborhood" (Reprise #2)
"Stand By Me"
"Baby, That is Rock & Roll" (Reprise)

** Spanish Harlem by Phil Spector and Jerry Leiber.*

Published by Mother Bertha Music, Inc. and Jerry Leiber Music by arrangement with ABKCO Music, Inc.

THE ORCHESTRA

MILTON GRANGER - Conductor, keyboard 1

ROBERT L. RUCINSKI - keyboard 2; **SEAN POTTER** - woodwinds; **THOMAS YOUNG** - guitar;
JOSEPH HIGGINS - bass; **GEORGE DARRAH** - drumset; **DESIREE GLAZIER** - percussion

The musicians in the North Shore Music Theatre Orchestra are members of the American Federation of Musicians

Now Offering Online Booking for All Appointment Types!



Mention North Shore Music Theater and get **25% off** your first cosmetic procedure (new patients only)

Treating all your skin concerns:

- ❖ Newly Updated Medical and Surgical Dermatology Center
- ❖ Full Spectrum of Dermatologic Care From Acne to Advanced Skin Cancer Treatments
- ❖ Board-Certified Dermatologists, highly trained Nurse Practitioners and experienced Medical Aestheticians
- ❖ Offering a variety of minimally and non-invasive cosmetic procedures



(978) 525-0100 TO BOOK YOUR VISIT

WHO'S WHO IN THE CAST



ANDRÉS ACOSTA - he/him - (*Michael*), a NYC based AEA actor, is delighted to return to NSMT after playing Tommy DeVito in the 2019 production of *Jersey Boys*. Other NSMT credits include *Saturday Night Fever & Evita*. National Tours: *West Side Story* (Bernardo) *Jersey Boys* (Gyp) *Flashdance* (Joe) Other Credits: *A Walk On The Moon* (George Street Playhouse) *South Pacific* (PaperMill Playhouse) *Evita* (Asolo Rep) *In The Heights* (PCLO) *On Your Feet* (Gateway.) Upcoming: *Legally Blonde* (The Muny.) BFA Music Theatre FSU. Special thanks to Bill, Stephanie, Milton, Kevin & Matthew. Love to my Sean. IG @TheAndresAcosta



KORIE LEE BLOSSSEY - he/him - (*Fred*) is grateful and thrilled to be making his NSMT debut with this fun-filled show! Korie was last seen as The Genie on The First National Tour of Disney's *Aladdin*. Some favorite past roles include Nicely-Nicely *Guys & Dolls*, Kerchak *Tarzan*, Caliban *The Tempest*. A Big Thank You to My Family, Friends, Ellery Sandhu and everyone at The Mine. Welcome to the neighborhood, Tag me @Korieleeitsme



CHRISTOPHER BRASFIELD - he/him - (*Victor*) a Mississippi native, writer, and recording artist, is excited to join the North Shore family and be a part of this amazing production celebrating the music of Lieber and Stoller. Notable credits include, National tours: *The Book of Mormon*, *Hairspray*, *Smokey Joe's Cafe* 20th Anniversary Tour ft. The Coasters; Off Broadway: *Choir Boy*, *Dear Edwina*, *The Columbine Project*; Regional: *In The Heights* (Phoenix Theatre), *Hairspray* (Paper Mill Playhouse), *Ain't Misbehavin'* (Herb Strauss Theatre), *Smokey Joe's Cafe* (Capital Repertory Theatre); TV/Film: Jett in "The Chica Show" (NBC); Concerts: *The Boy Band Project* (Chelsea Table and Stage), *American Songbook* ft. Jesse Mueller and Jarrod Spector (PBS). Thank you KFERG for the continued love and support.



KELSEY DENAE - she/her- (*Pattie*) is absolutely thrilled to be back onstage after a two-year hiatus, and to be making her North Shore debut! A Green Bay native (#GOPACKGO), Denae holds a BFA in Musical Theatre from the University of Wisconsin-Stevens Point. For the past decade, Denae has called NYC home, performing not only in the city, but regional theatres, touring companies and international waters as well. Denae is a proud member of Actor's Equity (AEA). Favorite Credits: Broadway National Tour of *Les Misérables* (Wigmaker/Fantine u/s), *9 to 5* (Judy), *Rent* (Maureen), *Show Boat* (Julie), *Always Patsy Cline* (Patsy). Shout out to my team at Hudson Artists Agency, and much love to family and Jacob.



DOMONIQUE FOSTER - she/her- (*Swing*) was born and raised in North Carolina. She grew up surrounded by all genres of music. She is a powerhouse and gives a dynamic performance on every stage presented. She is a songwriter and performer who has evolved over the years, expanding her talents across the seas with well-known Cruise Lines; Royal Caribbean & Norwegian. Her passion has made the saying "Living The Dream" possible. Domonique continues to strive to give the people what they want ... A SHOW!

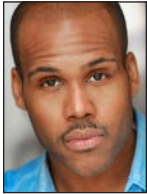


NICOLE HENRY - she/her- (*Brenda*) excitedly returns to NSMT after playing Nicki in the 2019 production of *The Bodyguard* which was her return to theatrical stage since graduating from the University of Miami. She also appeared in the 2021

world premiere of *A Wonderful World* (Alpha Smith) at Miami New Drama. As a recording artist, Henry has headlined in 20 countries and earned a *Soul Train Award* for "Best Traditional Jazz Performance." Her latest CD "Time to Love Again" is her eighth release— four of which have reached TOP 10 nationally on radio and sales charts in the U.S., the U.K. and Japan.

WHO'S WHO IN THE CAST

She gives thanks for BRS Gage Agency, family, friends and the countless blessings and miracles in life. @nicolehenrymusic #loveistheanswer



DAVID HUGHEY - he/him - (*Adrian*) is truly thrilled to be making his NSMT debut with such a stellar cast! A Pittsburgh native, David has been featured on and off Broadway, as well as the big and little screens. Some of his credits include: Broadway: *Waitress*, *The Gershwins' Porgy and Bess*. Off Broadway: *Das Barbecü*. National Tours: *Waitress* 1st National, *The Gershwins' Porgy and Bess* 1st National, TV and Film: "Lincoln Rhyme Hunt for the Bone Collector" (NBC), "FBI Most Wanted" (CBS), "Live from Lincoln Center" (PBS), "The Underground Railroad" (Amazon), *12 Years A Slave*. He is a graduate of Oberlin Conservatory of Music, and Manhattan School of Music. Connect - www.davidhughey.com, @mrdavidhughey



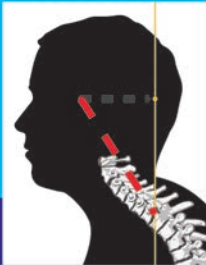
TYLLER KENKE (*Swing*) is a recent graduate of Boston Conservatory at Berklee BFA Musical Theatre. A few credits include, *Once On This Island* (Speakeasy Stage Company) and *Queens* (Moonbox Productions). During his time at the conservatory he has worked on the following productions: *Good Kids*, *PEMDAS*, *Can't Keep Quiet*, *Shrek*, and *BoCo sings Sondheim*. Special thanks to Jessica Webb, Charles Vincent Burwell, Jean Pierre Kenke, Judith Minko Kenke, and Bill Cotten. tyllerkenke.com



KATIE LaDUCA - she/her- (*Swing, Co-Dance Captain*) is so grateful to be working alongside this amazingly talented cast for her first show at NSMT! Some of her favorite credits include: *Smokey Joe's Cafe*, *Sin-*

ARE YOU SHIFTED?

Chronic health issues can sometimes be related to a structural abnormality with the spine



COLLATERAL DAMAGE

- Tension Headaches
- Muscle Pain
- Immobility
- Dizziness
- Low Energy
- Poor Sleep
- Shoulder Pain
- Joint Pain
- Digestive Dysfunction
- Degenerative Disc Disease
- Degenerative Joint Disease
- Migraine Headaches
- Muscle Tension

Visit beverlychiropractic.com for your FREE Posture Self-Assessment Tool

Beverly Family chiropractic 978-927-5880
72 Sohler Rd. Beverly, MA

MHD&S

MACLEAN HOLLOWAY
DOHERTY AND SHEEHAN

978-774-7123



8 ESSEX CENTER DRIVE

PEABODY

978-774-7123

WHO'S WHO IN THE CAST

gin in *The Rain*, *Mamma Mia*, *Beehive The 60's Musical*, *A Chorus Line*, *West Side Story* and the National Tour of *Saturday Night Fever* (Dance Captain/Swing). She would like to thank her family and friends for their love and support. To my brother Tommy, thank you for being a guiding light in this next chapter of my life. We love dance!! @katieladuca_



NATHAN LUCREZIO - he/him - (*Ken*, *Co-Dance Captain*) is so excited to make his NSMT debut in *Smokey Joe's Cafe*. Nathan can be seen as Andrew Morton in the Netflix special *DIANA The Musical*, which opened on Broadway last year.

His Broadway debut was *Roger's and Hammerstein's Cinderella*, and then he joined the Disney Hit, *Aladdin*. TV appearances include *The "Equalizer"*, *"First Wives Club"*, and *"Smash"*. Other notable theater credits are *The Broadway National Tour of A Chorus Line*, and *The Life at City Center Encores*. Nathan is currently devel-

oping his own musical *UnHeard*, and has performed numerous times at 54 Below. Connect with Nathan online at @nathanlucrezio and visit his website at www.nathanlucrezio.com. Proud B.F.A. MT graduate from PSU. Nathan is represented by BWA.



MARIAH LYTTLE - she/her - (*BJ*). National Tour credits include: *The Color Purple* (Celie). Regional credits include: *Ain't Misbehavin'* (Armelia) at Pioneer Theatre Company in Salt Lake City, Utah, *The Wiz* (Dorothy) at Virginia Repertory Theatre, *Ragtime* (Sarah) and *Ain't Misbehavin'* (Self) at Park Playhouse in Albany, NY, and *Hairspray* (Dynamite/Motormouth Kid) at Hope Summer Repertory Theatre in Holland, Michigan. Ithaca College '19, BFA in Musical Theatre. www.mariahlyttle.com

HOMEOWNERS BESTFRIEND

CRANNEY HOME SERVICES

Plumbing • Heating • Cooling • Electrical • Drain Cleaning

WWW.CRANNEYHOMESERVICES.COM

ONE CALL DOES IT ALL
1-800-CRANNEY



WHO'S WHO IN THE CAST



DWAYNE P. MITCHELL - he/him - (*Swing*) is honored to debut with NSMT. He holds degrees from the HBCU Fisk University, where he was featured on the Grammy award winning album "Celebrating Fisk", and

from The Boston Conservatory at Berklee (MFA Musical Theatre). He has performed nationally and internationally, most recently as a featured singer with Royal Caribbean Cruise Lines. Favorite previous credits include *Choir Boy* (SpeakEasy Stage) and *Fences* (Umbrella Stage). Dwayne hopes his artistry will reach and help bridge opportunity gaps for black artists and artists of color. Glory to God! @dwaynepmittchell"



BAILEY PURVIS - she/her- (*DeLee*) is honored to make her debut at NSMT in one of her dream shows! Broadway National Tours: *Bring It On* (Sky- lar), *Mamma Mia!* (Tanya). Favorite credits include: *Jersey Boys* (Mary Delgado) at Ogun-

quit Playhouse, *Beehive* (Janis Joplin) at Riverside Theatre, *Mamma Mia* at Westchester Broadway Theatre, *The Victory Belles* at the National WWII Museum, *Priscilla Queen of the Desert* (Marion) and *Legally Blonde* (Serena) both on Norwegian Cruise Lines. As a guest entertainer vocalist, she is the creator of her two solo rock shows *Heartbreaker* and *Disco Cowgirl*. She is a graduate of The Boston Conservatory and represented by Avalon Artists Group. IG: @bailey_purvis. www.baileypurvis.com

JERRY LEIBER & MIKE STOLLER (*Words & Music*) began their songwriting partnership in 1950 upon discovering that they had the same passion for Boogie Woogie and the Blues. If they had written no other song but *Hound Dog*, the names of Leiber and Stoller would still have been indelibly written in the history of popular music. However, as *Smokey Joe's Cafe - The Songs of Leiber and Stoller* makes abundantly clear, they didn't start or stop there. In fact, Leiber and Stoller's contributions as songwriters and record producers have been so monumental that it is impossible to envision what American popular music would be like today without them.

Their songs have been recorded by the likes of Elvis Presley, The Coasters, Jimmy Witherspoon, Little Esther, Amos Milburn, Charles Brown, Little Willie Littlefield, Bull Moose Jackson, Linda Hopkins, Ray Charles, Willie Mae "Big Mama" Thornton, The Beatles, The Rolling Stones, The Beach Boys, James Brown, Little Richard, Jerry Lee Lewis, Buddy Holly, Fats Domino, The Everly Brothers, Bill Haley and the Comets, Barbra Streisand, Jimi Hendrix, Muddy Waters, Johnny Mathis, Count Basie, John Mellencamp, Lou Rawls, Tom Jones, Edith Piaf, Bobby Darin, Peggy Lee, Chet Atkins, Aretha Franklin, Luther Vandross, B.B. King, Otis Redding and literally hundreds more.

STEPHANIE POPE LOFGREN (*Director & Choreographer*) is thrilled to be making her North Shore Music Theatre directorial debut with *Smokey Joe's Cafe*. She starred as Brenda in the Original London Production of *Smokey Joe's Cafe* and is a Broadway musical theater veteran who has appeared in 10 Broadway shows including the revival of *Pippin*, *Jelly's Last Jam* and the longest running American musical, *Chicago*, as Velma Kelly. Stephanie was chosen by legendary director/choreographer, Bob Fosse for her first two Broadway shows and is sanctioned to teach Fosse Master Classes on behalf of The Verdon Fosse Legacy, LLC. She has several projects in development including *Grin and Bare It*, which she conceived and will present at the Montclair State University New Works Initiative in the fall with her collaborator, Drama Desk Award winner, Chesney Snow. Other directing credits include *Forever Plaid* (Theatre Raleigh) and the upcoming *Lady Day at Emerson's Bar and Grill* (Playhouse on Park). Her production of *Smokey Joe's Cafe* for ACT of CT was named one of the best musicals of 2021 by the Connecticut Critics Circle. She sends love to her husband, Aarne Lofgren and daughter, Mari. Proud member: AEA, SAG-AFTRA, SDC www.stephaniepope.com

MILTON GRANGER (*Music Director*) returns to North Shore Music Theatre having previously music directed *A Christmas Carol* ('14 - '18, '21), *Sunset Boulevard*, *Jersey Boys*, *Hairspray*, *Jekyll & Hyde*, *Mame*, *42nd Street*, *Young Frankenstein*, *The Music Man*, *West Side Story*,

WHO'S WHO IN THE CAST

Singin' in the Rain, Mary Poppins, Saturday Night Fever, Anything Goes, Cats and Swing!. As pianist/conductor: Broadway: *Mary Poppins, The Woman in White, Chitty Chitty Bang Bang, Cyrano the musical, and Camelot* (with Robert Goulet). National Tours: *Phantom of the Opera, Big, Sunset Boulevard, Camelot*. International: *West Side Story*. Over 100 regional productions at North Shore Music Theatre, Baltimore Center-Stage, Westchester Broadway Theatre and others. Work as composer/lyricist: Two First Prizes in National Opera Association new chamber opera competition; nine chamber operas, performed regularly throughout U.S. and Canada. Several produced musical plays, including *Castle Walk* (NYMF Next Link Selection), and *Peter Rabbit and the Garden of Doom* (winner, Actors' Playhouse competition). milton-granger.com

KYLE DIXON (*Scenic Design*). Kyle's scenic artwork may be seen across the United States, from NYC to Las Vegas. Recent scenic designs include: *Mamma Mia!* ('18, '21), *The Bodyguard, Sunset Boulevard, Jersey Boys, Freaky Friday, Oklahoma!, Hairspray! Peter Pan, Mame, 42nd Street, Young Frankenstein, The Music Man, West Side Story* (North Shore Music Theatre), *White Christmas, Rock of Ages, and A Bronx Tale* (John W. Engeman Theatre), *Camelot* (Westchester Broadway Theatre), *The Broadway Classic Music Dance Review* (Tianqiao Performing Arts Center, Beijing, China), *Million Dollar Quartet, Saturday Night Fever, Newsies, Singin' in the Rain, Love and Other Fables, Chicago, Joseph and the Amazing Technicolor Dreamcoat, Mamma Mia!* (BroadwayWorld Regional Award), *Ain't Misbehavin', The Producers, Disney's Beauty and the Beast, The Music Man, Beehive, Buddy, West Side Story, The Wizard of Oz, Sister Act, and Young Frankenstein* (Theatre By The Sea, BroadwayWorld Regional Award), *Growing up 70's starring Barry Williams* (Off Broadway), *Angelina Ballerina, The Musical* (NYC, Toronto, National Tour), *Fancy Nancy, the Musical* (NYC, National Tour), *StinkyKids* (Off Broadway Alliance Award), *It Shoulda Been You* (starring Kim Zimmer) and *The Wizard of Oz* (Gretna Theatre, BroadwayWorld Regional Award), *Xanadu, Doubt, The Secret Garden and The Merchant of Venice* (Williams Center for the

Arts), and many more. Kyle has designed concert events for Faith Prince, Tommy Tune, Pam Tillis, and the NC gubernatorial Inauguration Gala (Telly Award). In addition to theatre, Kyle accepts fine art commissions and is the designer of North Carolina's historic Elizabethan Gardens' *Winter Lights*. KyleDixonDesigns.com
Instagram: @kyle_dixon_designs

KELLY BAKER (*Costume Design*) is so happy to back for another season! Previous NSMT Costume Design/Coordinator credits include: *Mamma Mia!* ('21, '18), *The Bodyguard, Sunset Boulevard, Jersey Boys, Freaky Friday, Oklahoma!, A Christmas Carol, Hairspray, Jekyll & Hyde, Peter Pan*, as well as TYA shows *A Year With Frog and Toad* and *Curious George and the Golden Meatball*. Other companies she has worked for include: The Boston Conservatory at Berklee, New England Conservatory, Greater Boston Stage Company, Odyssey Opera, The Cape Playhouse, Commonwealth Shakespeare Company, Theatre By The Sea, and OIV's Ouroboros Trilogy. Thank you to Kevin, Karen, Matthew and the amazing NSMT Wardrobe Crew for all that they do! Hi Mama!

JACK MEHLER (*Lighting Design*). Previous work with NSMT includes Scenery & Lighting for *Jekyll & Hyde* (2018, IRNE nomination), *Singin' in the Rain* (2016), *Billy Elliot The Musical* (2015), *Miss Saigon* (2013), Scenery for *West Side Story* (2003), and Lighting for *Oklahoma!, A Christmas Carol* ('02-'19, '21); 2012 IRNE nomination), *Annie, Camelot* (IRNE nomination), *Children of Eden, 42nd Street, Funny Girl, Gypsy, Hairspray, High School Musical, Jesus Christ Superstar, The King and I, A Little Night Music, My Fair Lady, Nine* (IRNE nomination), *Ragtime, The Producers, Thoroughly Modern Millie, West Side Story* (2016), *Wizard of Oz*, and *Young Frankenstein*. He received the 2012 (*Elisabeth*) and 2013 (*Rebecca*) Korean Musical Theatre Awards (Korean Tony) for Lighting Design of the Year. Other Theatre design credits include Walnut Street Theatre, Paper Mill Playhouse, Manhattan Theatre Club, Riverside Theatre, Cleveland Play House, Seattle Rep, Syracuse Stage, Weston Playhouse, The Working Theatre and WPA among many others. Dance: Joffrey Ballet, Lar Lubovitch, Alvin Ailey American

WHO'S WHO IN THE CAST

Dance Theatre, San Francisco Ballet, Donald Byrd/Spectrum Dance, Hubbard Street Dance Chicago, Jose Limon, Ballet Memphis and others. Jack also provides owner's design representation for organizations building or renovating performance and rehearsal spaces and is on the Board of ACT of Connecticut where he received Broadway World Connecticut awards for both scenery and lighting design for *Evita*.

DON HANNA (*Sound Design*) is happy to be returning to NSMT for *Smokey Joe's Cafe*. Don is a freelance sound designer and engineer whose work can be seen (well, heard) in national tours, regional theaters, and concert productions alike. Touring Highlights: *An American In Paris* (Sound Design, Big League Productions), *The Wizard of Oz National/International Tour* (Sound Design, Apex Touring), *Pippin National Tour* (Associate Sound Design/Head Audio, Apex Touring), *Fame The Musical* (Sound Design). Regional Highlights: Regional Premier of *Rock of Ages* (Sound Design, Gateway Playhouse), the world premier of *Heartbreak Hotel* (Sound Design, Ogunquit Playhouse), *Mel Brook's Young Frankenstein* (Sound Design, North Shore Music Theatre, Gateway Playhouse, Ogunquit Playhouse), *In The Heights* (Sound Design, John W Engeman Theatre), among many more. A special thank you to my friends, family and Bethany for their continual love and support.

RACHEL PADULA-SHUFELT (*Hair and Wig Design*) Broadway credits include: *Glass Menagerie*, *Waitress*. Regional: *Macbeth in Stride*, *Moby Dick* Elliot Norton Award winner- Best Design), *Black Clown*, *Waitress*, *Fingersmith* (Elliot Norton Award winner- Best Design), *Natasha*, *Pierre and the Great Comet of 1812* (Elliot Norton award winner- Best Design), *Marie Antoinette*, and *Crossing with American Repertory Theatre*. *The Colored Museum* at Huntington Theatre Company. Rachel is the hair and makeup supervisor for Boston Ballet.

ALBERT GUERZON (*Associate Choreographer*) is feeling blessed to revisit the cafe! Broadway credits: *Mamma Mia!*, *Ghost*, *Honey-moon In Vegas*, *Escape to Margaritaville* and the upcoming Broadway production of *Into The Woods* starting the end of June. Off Broadway:

The Visitor (Public Theater), *The Life* (Encores) directed by Billy Porter and more recently *Into the Woods* (Encores). Nat'l tours: *Mamma Mia!*, *Escape to Margaritaville*. Some other favs: Twyla Tharp's *The Times They Are A-Changin* (World Premier), *The Wiz* (La Jolla Playhouse), *Yoshimi Battles the Pink Robots* (LJP). Thank you Steph and team North Shore for having me. Love you Es!

STEPHEN MacDONALD (*Production Stage Manager*) is excited to be working on another production with North Shore Music Theatre after stage managing *A Christmas Carol* ('21) and *Mamma Mia!* ('21). Other recent credits include *The Inheritance*, *People, Places and Things* and *Admissions* with Speakeasy Stage Company of Boston, *Mamma Mia!* ('21) at Theatre by The Sea, and *A Year with Frog and Toad TYA* at North Shore Music Theatre. When not working professionally as a stage manager, Stephen spends his time directing and designing educational productions, teaching future generations of performing and technical theatre artists.

DAKOTAH WILEY HORAN (*Assistant Stage Manager*) is thrilled to be back having worked as the Assistant Stage Manager on *A Christmas Carol* '16 - '19, '21, *Mamma Mia!* ('18, '21), *The Bodyguard*, *Sunset Boulevard*, *Jersey Boys*, *Freaky Friday*, *Oklahoma!*, *Hairspray*, *Jekyll & Hyde*, *Peter Pan*, *Mame*, *42nd Street*, *Evita*, *Young Frankenstein*, *Disney's Beauty and the Beast*, *The Music Man*, *West Side Story*, *Spamalot* and *Singin' In The Rain*, and as the Production Assistant for *Mary Poppins* and *Funny Girl*. Some of her previous Stage Management credits include: Capital Repertory Theatre: *Betrayal*, *Marvelous Wonderettes*, *Cactus Flower*, *33 Variations*, *Leslie Uggams in Uptown Downtown*, *Man of La Mancha*, and *Single Girls Guide*. Pendragon Theatre: *Clean House*, and *Twelve Angry Men*. She would like to thank her parents for instilling and encouraging her love of theatre, and to her friends and her North Shore family for always supporting her.

ROBERT L. RUCINSKI (*Assistant Music Director/Rehearsal Pianist*) is thrilled to be returning for another season at NSMT. Past NSMT Music Director is thrilled to be returning for another

WHO'S WHO IN THE CAST

season at NSMT. Past NSMT Music Director credits include *A Christmas Carol* ('19), *A Year with Frog & Toad*, *School House Rock Live Jr.* Past Assistant Music Director credits include *A Christmas Carol* ('04 - '07, '10 - '18, '21), *Sunset Boulevard*, *Jersey Boys*, *Freaky Friday*, *Oklahoma!*, *Hairspray*, *Jekyll & Hyde*, *Peter Pan*, *42nd Street*, *West Side Story*, *Singin' in the Rain* ('06 & '16), *Les Misérables*, *The Little Mermaid*, *The King and I*, *Forever Plaid*, *Seven Brides for Seven Brothers*, *Crazy for You*, *Cinderella* ('05-'06), *Ain't Misbehavin'*, *Damn Yankees*, *Camelot*, *Fame*. Robert has been music director at many theaters throughout New England and teaches at several high school and university theater programs in the local area. A native of Jersey City, NJ, he now lives in Arlington, MA. More info at RucinskiMusic.com.

BILL HANNEY (*Owner/Producer*) is honored and proud to have been responsible for both the 2007 purchase and re-opening of Theatre By The Sea (theatrebythesea.com), the landmark

500 seat professional summer theatre and restaurant in Wakefield, RI and the 2010 purchase and re-opening of North Shore Music Theatre (nsmt.org), the 1,500 seat nationally renowned regional theatre in Beverly, MA.. He began his career in show business at age 19, leasing and developing movie theaters, including his first multiplex in Quincy, Massachusetts. Before long, he was booking rock shows (Jefferson Starship, Rush) and other types of live entertainment, which eventually led to the presenting and producing of Broadway productions. One such show was an appearance by the legendary mime artist, Marcel Marceau. As president of Broadway Productions, Bill presented national tours such as *Annie*, *Amadeus*, *Dancin'*, *Peter Pan*, *The Rocky Horror Show* and *Mark Twain* starring Hal Holbrook, throughout New England including Worcester, Springfield, Portland, Maine and Boston. Throughout his career, Bill has stayed focused on his movie theatre chain having bought, built, owned, operated and sold more than 30 cinemas. His company, Entertainment Cinemas, currently operates seven movie

TRAFFIC and WEATHER
Together on the 3s

Breaking News
When it Happens

WBZ NEWSRADIO 1030
NEW ENGLAND'S
TRUSTED SOURCE
FOR NEWS AND
INFORMATION

WBZ 1030
NEWS RADIO

IHEART.COM

WHO'S WHO IN THE CAST

complexes in four states. In 2009, Bill was elected President of the Theatre Owners of New England. Bill's ongoing work with NSMT inspires him to consider acquiring additional performance venues at which he plans to someday share his productions between his theatres. Bill has been named to the North Shore Top 100 by the North Shore Chamber of Commerce. In 2012, he was recognized by both the Beverly Chamber of Commerce and Salem Chamber of Commerce as Business Person of the Year. He is the recipient of the 2015 Leslie S. Ray Hall of Fame Award, presented by the Greater Beverly Chamber of Commerce. Bill is a member of the League of Broadway Producers and was involved with the recent revival of *Pippin*, as well as developing several new musicals. Bill also produces Cape Live!, a summer entertainment series at the Barnstable Performing Arts Center in Hyannis.

KEVIN P. HILL (Additional Staging, *Producing Artistic Director*). Born and raised in Waltham, Massachusetts, Kevin began his theatrical ca-

reer as dancer and actor. He appeared in National Touring companies of *Hello, Dolly!* with Carol Channing, Leslie Uggams and Michele Lee, *Anything Goes* and the International Touring Company of *A Chorus Line*. New York audiences have seen him in the Off-Broadway production of *Party*. Regional credits as a performer include: *West Side Story*, *Good News! A Chorus Line*, *My Fair Lady* and *Marvin in Falseland*. Kevin has directed and choreographed over 100 productions across America. He has had the privilege of working with such stars as Marin Mazzie, Joanne Worley, Kathleen Turner, Josh Groban, Jonathan Groff and Tony Award winner, Cady Huffman. In New York, he was the assistant to the director of *On the Twentieth Century* at the New Amsterdam Theatre and assistant to the choreographer on the revival of *Guys and Dolls*. He directed and choreographed *Mamma Mia!*, *Sunset Boulevard*, *Jersey Boys*, *A Christmas Carol*, *Young Frankenstein*, *Mary Poppins*, and *Sister Act* here at NSMT and *Mamma Mia!*, *Smokey Joe's Cafe*, *Sister Act*, *Young Frankenstein*, *Mary Poppins*, and *Grease*



NSMT YEAR-ROUND EDUCATION CLASSES

ACTING • IMPROV • DANCE CLASSES
FOR KIDS | TEENS | ADULTS 19+

INFORMATION: [NSMT.ORG/EDUCATION](https://www.nsmt.org/education)

WHO'S WHO IN THE CAST

at Bill Hanney's Theatre By The Sea in Rhode Island, where he is also Producing Artistic Director. Kevin has been nominated as Best Director/Choreographer for his work on *Smokey Joe's Cafe*, *Rent*, *The Full Monty*, *Chicago*, and *Edwin Drood*, and was awarded the NH Theatre Award for Best Choreography for *West Side Story* at the Papermill Theatre. Kevin has also been awarded Six Broadway World awards and two Motif awards for his productions of *Mamma Mia!*, *Mary Poppins* and *Young Frankenstein*. Future projects include an original danced play called *Standing Still*. As a Professor of Dance, Kevin has been on faculty at Pennsylvania State University, Kansas State University and most recently The Boston Conservatory of Music. Kevin is a proud member of SDC, AEA and Dance Masters of New England, Chapter 5.

MATTHEW CHAPPELL (*Casting Director*) is honored to continue working with this remarkable creative team as resident Casting Director and Associate Producer for Bill Hanney's North Shore Music Theatre and resident Casting Director for Theatre By The Sea. An accomplished performer, he is fortunate to have worked all over the world in more than 30 productions, including several shows at NSMT, as lead vocalist in *Stephen Schwartz's Magic To Do* for Princess Cruise Lines, and appearances at Feinstein's/54 Below, The Duplex, Carnegie Hall, and The Metropolitan Room. For many years, Matthew worked as a talent agent, casting associate, and photographer for Heyman Talent Agency, specializing in TV/film, commercials, runway, print and voiceovers. He is a former Associate Pro-

ducer for Encore International, casting and producing shows for theme parks, cruise ships, and corporate events.

ACTORS' EQUITY ASSOCIATION (AEA), founded in 1913, represents more than 45,000 actors and stage managers in the United States. Equity seeks to advance, promote and foster the art of live theatre as an essential component of our society. Equity negotiates wages and working conditions, providing a wide range of benefits, including health and pension plans. AEA is a member of the AFL-CIO, and is affiliated with FIA, an international organization of performing arts unions. The Equity emblem is our mark of excellence. www.actorsequity.org

NORTH SHORE MUSIC THEATRE (NSMT) Since 1955, NSMT has become one of the most attended theatres in New England, with approximately 250,000 patrons annually. With a national and regional reputation for artistic achievement, NSMT has received numerous industry awards including Elliot Norton Awards, IRNE Awards, the Rosetta Le Noire Award from Actors' Equity, and the Moss Hart Award. NSMT produced the World Premiere of *Memphis* in 2003, the show went on to win four 2010 Tony Awards including Best Musical. Under the new ownership of Bill Hanney in 2010, NSMT continues to annually produce a musical subscription series and an annual production of *A Christmas Carol* along with celebrity concerts, children's programming, and year-round education programs for all ages.

NEXT ON STAGE ...

RODGERS + HAMMERSTEIN'S
CINDERELLA

SPONSORED BY
ABIOMED **JULY 12 - JULY 24**



NORTH SHORE MUSIC THEATRE STAFF

Owner/Producer Bill Hanney
Producing Artistic Director Kevin P. Hill
General Manager Karen Nascembeni
Chief Financial Officer Tom Senter
Director of Marketing
and Communications Mike Ceceri
Director of Education Kyla Moulton
Finance Manager Diane Ford
Finance Associate Kathy Carnevale
Corporate & Community
Relations Associate Kirk P. Mansfield
Administration Intern Michael Galvin
Production Photography Paul Lyden
Videographer Award Productions
Accounting Firm CompCo Associates
Legal Counsel Tom Alexander,
Alexander & Femino

PATRON SERVICES & CONCESSIONS

Director of Patron Services Suzanne Kendall
Box Office Customer Service Reps Tom Amos,
Rosanne Coble, Carol Dempsey, Darlene Dugan,
Donna Full, Lorrie Goudreau, Nancy Jewell,
Jaclyn Rosenberg, Jean Souza
Bar/Concession Staff Jim Coble, Irene Cote,
Cathi Crouse, Ron Devoe, Erin Gardner, Paula
Guptill, Michael Galvin, Chris Kendall, Darla
Loundsbury, Mike Mitchell, Pam
Morose, Katy Place, Marielle Sabbag
House Manager Jackie Rapisardi
Ushers .. Jill Benas, Ann Berman, Brenda Berry,
Grace Bigus, Susan Capodilupo, Dianne Carter,
Melissa Clark, Jane Cohen,
Paul Cohen, Karla-Luisa Consoli, Anna
Craig, Jean Dawson, Nancy Jo Delaney,
Tom Delaney, Lori DeNisco, Joan Dolan,
Marisa Englin, Connie Fabello, James
Ferguson, John Filip, Gregory Gibson,
Diane Gordon, Ruth Greco, Betsy
Holbrook, Mary Jarmolowicz, Dorrie
Kimkaran, Gladie Kneeland, Susan
Kuppens, Walt Kosmowski, Katie Linares, Audrey
Linsky, Cindy Maguire, Louise McKenna, Laurie
McCracken, Ginny Mocerri, Beverly Nathan, Gloria
Nicastro, Kathy Nylin, Linda O'Keefe, Mary
O'Shea, Helen Papele, Dottie Pinkham, Paula
Pobiedzinski, Susan Rizzo, Susan Rogers, Harriet
Sant Fournier, Robert Sant Fournier, Jayne
Theodore

FACILITIES

Director of Facilities Heather Romani
Facilities Managers Rick Dunn
Facilities Crew Chanel Call, Chris Moudarri,
Mike Symonds
Parking Attendants Gavin Bioghosian, Jenna
Boghosian, Paul Coughlin, Beatriz DaCosta,
Daniel Fiore, Kay Fortado, Tim Geary,
Jerome Guilebbe, Daniel Grant, Kara Hersey,
Patrick Johnson, Bob Laws, Kirsten McMahon,
Candy Melanson, Ryan Munzing, Erin Perry,
Riley Riordan, Dakota Sprankle, Makayla
Sprankle, Joesph St. Pierre, Kaitlyn Wilson

PRODUCTION

PRODUCTION ADMINISTRATION

Associate Producer/Casting Director
/COVID Compliance Officer Matthew Chappell
Production Manager Daniel T. Simons
Associate Production Manager Scott G. Nason
Company Manager/ COVID
Compliance Officer Amanda Ostrow-Mason
Assistant Company Manager/
COVID Compliance Officer Mariah Ruben
Musician Contractor Jay Daly

SCENE SHOP

Technical Director Mark Vagenas
Assistant Technical Director Mike Gove
Carpentry Lead Myles McMann
Assistant Carpentry Lead David Adriance
Carpenters Abbey Kulhavy, Chris Parsons
Stagehands ... Ben Florance (Mechanics Operator),
Andrew Duggins (Props), Bovie Boisvert
Spotlight Operators Melanie Raimo,
Sarah Scougal, Jake McStay,
Rebecca Gosiewski, Michelle Murray,
Johanna Cheshire

PAINT SHOP

Paint Charge Sasha Seaman
Assistant Paint Charge ... Shannon "Soks" Gemma

PROP SHOP

Props Lead Adam Nicol
Props Artisan Andrew Duggins

ELECTRICS

Lighting Lead Sheila Donovan
Assistant Lighting Lead Tom Brabant
Electricians Brendan Marr, Violet Gayzagian

SOUND

Audio Engineer Adam Bates
Mic Tech Nick White

COSTUMES

Costume Shop Manager Kelly Baker
Wardrobe Supervisor Kat Shanahan
Assistant Costume Shop Manager Joellen Olari
Lead Dresser Joey Pisano
Stitchers/Dressers Kiara Escalera,
Hannah Cousins

STAGE MANAGEMENT

Production Stage Manager ... Stephen MacDonald*
Assistant Stage Manager Dakotah Wiley Horan*
Production Assistant Abby Ray, Bovie Boisvert
Stage Operations Lead Derek Hodge

*Members of Actors' Equity Association

2022 CORPORATE CIRCLE

NSMT thanks the following organizations for their leadership through corporate support.

2022 SHOW SPONSORS



PRODUCER



DIRECTOR



CHOREOGRAPHER



CONDUCTOR



OUT AT THE NORTH SHORE



COMMUNITY PARTNERS

ACTOR WELCOME BAG



HOTEL PARTNER



SPECIAL THANK YOU TO OUR PREFERRED VENDORS



To find out more about North Shore Music Theatre corporate memberships, please contact:
Kirk P. Mansfield, Director of Corporate & Community Relations | 978.232.7200 x7277 | kmansfield@nsmt.org

SCAN THIS QR CODE TO VIEW & DOWNLOAD THE FULL PROGRAM FOR THIS SHOW

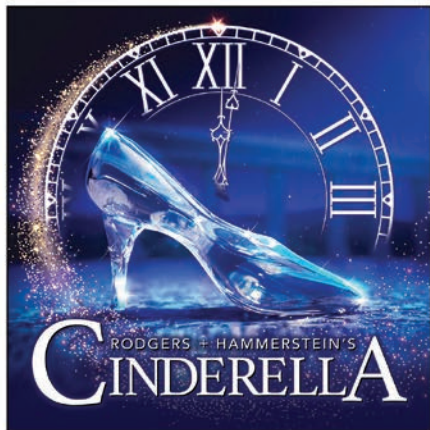
1. Open the Camera or QR Code reader on your phone.
2. Hold your device over a QR Code so that it's clearly visible within your smartphone's screen. Two things can happen when you correctly hold your smartphone over a QR Code. The phone automatically scans the code.
3. If necessary, press the button. Presto!



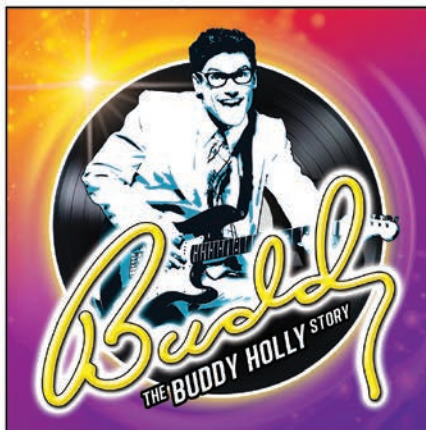
FULL PROGRAM ALSO AVAILABLE ONLINE: WWW.NSMT.ORG/SMOKEYJOESCAFE

Summer fun is back!

2022 Summer Musicals

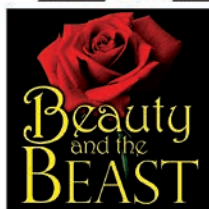


JULY 12 - JULY 24



AUGUST 16 - AUGUST 28

2022 Summer Kids Shows



TUESDAY
JUNE 28 • 10AM & 1PM



THURSDAY
JULY 7 • 10AM & 1PM



THURSDAY & FRIDAY
JULY 28 • 10AM | 29 • 10AM & 1PM



TUESDAY
AUGUST 23 • 10AM & 1PM

NORTH SHORE MUSIC THEATRE • NSMT.ORG
978.232.7200 • 54 DUNHAM ROAD • BEVERLY, MA     @OFFICIALNSMT